

Flat 6 19 The Bayle

FOLKESTONE, Folkestone

CT20 1SQ

£1,100

pcm

TO LET WITH BURNAP AND ABEL... *****FULLY FURNISHED***** An exquisite one bedroom apartment in the character filled area of The Bayle. This newly converted block of 6 apartments have been finished to an extremely high quality and boast features to fit in with it's surroundings.

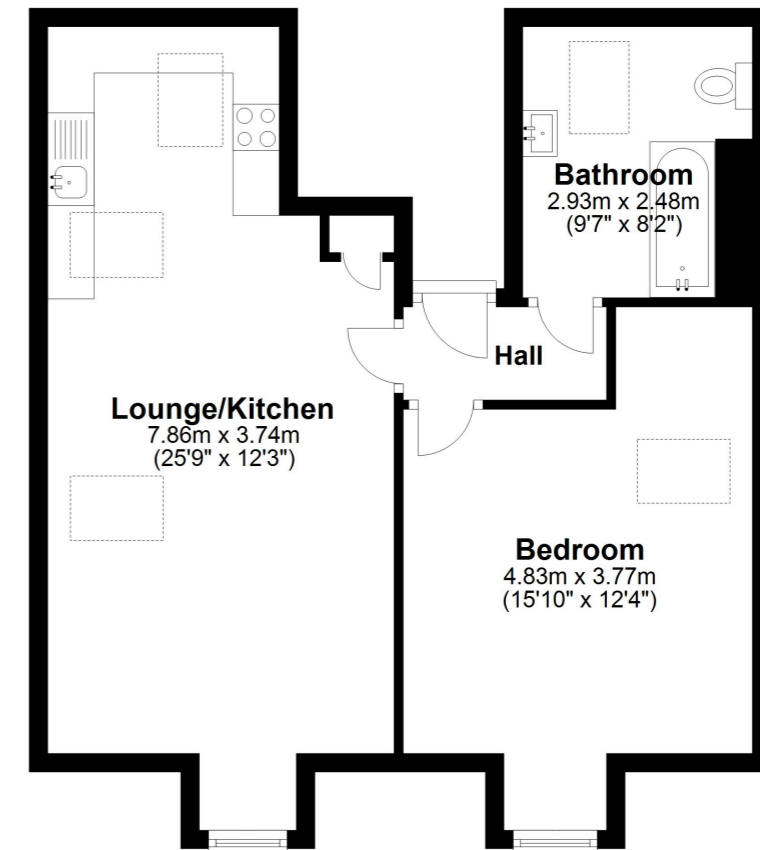
This property comprises an open plan kitchen/living room, bathroom and double bedroom. The kitchen has been fitted with a shaker style kitchen with integrated cooker, hob with extractor fan, washing machine and under counter fridge and freezer. The bedroom is fitted with neutral carpets and boasts distant sea views. Iron radiators and finished with brass accessories throughout. The bathroom has been designed to match those brass hints around the property. White and gold tiling on the walls and floors, WC, hand basin and bath with overhead shower with brass shower fittings, taps and heated towel rail.

No pets, no smoking, working or retired tenants.

www.burnapandabel.co.uk



Third Floor
Approx. 54.9 sq. metres (591.5 sq. feet)



Whilst every attempt has been made to ensure the accuracy of the floor plan contained here, measurements of doors, windows, rooms and any other items are approximate and no responsibility is taken for any error, omission or mis-statement. This plan is for illustrative purposes only and should be used as such by any prospective purchaser.
Plan produced using PlanUp.

