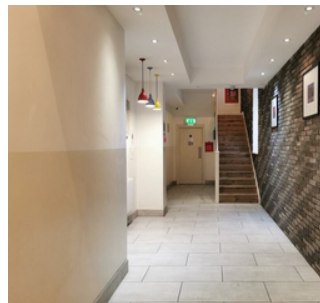
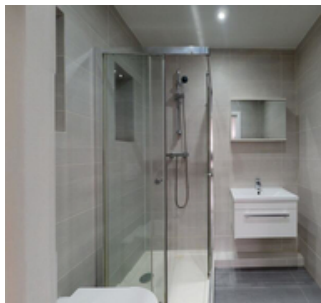
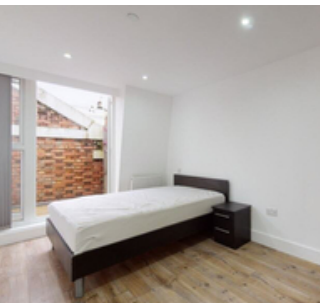




£1,300 PCM

KILBURN HIGH ROAD, LONDON. NW6

- Studio Flat
- Fitted Kitchen
- White Bathroom Suite
- Woodern Flooring Throughout
- Big Windows and High Ceilings
- Communal Laundry Facility
- Brondesbury Overground and Kilburn High Tube Station
- Bills Include: Gas and Water
- Kilburn High Road. Kilburn
- Available 1st February 2024



PROPERTY SUMMARY

Presenting a spacious studio flat to rent in Kilburn, Kilburn High Road. This property is situated on the second floor with exceptional of big windows and high ceilings. Further features and amenities include fitted kitchen, white bathroom suite and a communal laundry facility within the building. Additional bills are included of Gas and Water.

Excellently located along Kilburn High Road with great transport links from Brondesbury Overground and Kilburn Tube Station and just a short walk from Kilburn Grange Park.

Available 1 February 2024.