



## The Walk, Potters Bar, Hertfordshire, EN6

**£960,000**

- FIVE BEDROOM SEMI DETACHED HOUSE
- OPEN PLAN KITCHEN / LOUNGE / DINER
- OFF STREET PARKING
- 5 MINUTES WALK TO POTTERS BAR MAINLINE STATION
- SOUGHT AFTER RESIDENTIAL ROAD
- DOWNSTAIRS SHOWER ROOM
- POTENTIAL FOR LOFT CONVERSION (STPP)
- STUDY/BEDROOM
- CHAIN FREE



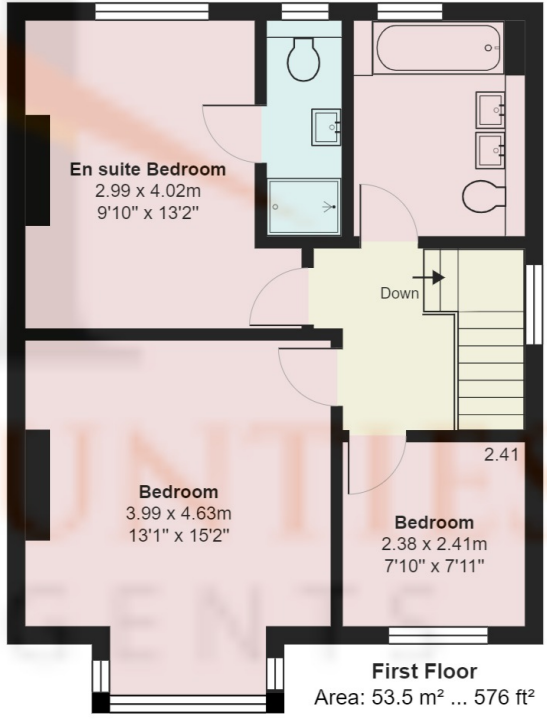
# The Walk, Potters Bar, Hertfordshire, . EN6

## £960,000 Freehold

This superb FOUR / FIVE Bedroom Semi detached home is ideally located on one of Potters Bar's most sought after Roads, just moments from Potters Bar Mainline Station and both High Streets. The home has been tastefully refurbished to a very high standard throughout and benefits from separate lounge to front, stunning open plan modern fitted kitchen / lounge / diner to the rear, featuring granite work tops, integrated Bosch appliances, Quooker Hot tap and Range style cooker oven. There is a separate utility room, downstairs shower room and downstairs guest bedroom to the rear plus separate study/5th bedroom to the front.

The first-floor features three good size bedrooms and a larger than average family bathroom with his and her sinks. Steels are also placed for those wishing to further extend to the first floor at the side and there is an option for a loft conversion should buyers wish to add further a bedroom and en-suite.

Externally the property has a large mature garden and off-street parking to the front.



## The Walk, Hertfordshire EN6

Total Area: 150.0 m<sup>2</sup> ... 1614 ft<sup>2</sup>

All measurements are approximate and for display purposes only

