



## **7 Gwendoline Court, Woodthorpe Road, Ashford, Surrey, TW15 3JS**

SHARE OF FREEHOLD | WELL PRESENTED & SPACIOUS ONE BEDROOM APARTMENT SITUATED IN SMALL SELECT DEVELOPMENT IDEALLY LOCATED FOR MAINLINE TRAIN STATION & HIGH STREET. The property benefits from a spacious lounge/diner, modern fitted kitchen/breakfast room, large double bedroom, modern white bathroom suite, well-kept communal gardens, residents parking & garage. No Onward Chain. Viewings Highly Recommended!

## ROOM DESCRIPTIONS

---

### **Communal Entrance**

With security entry door, stairs to second floor.

### **Second Floor**

#### **Entrance Hall**

Light and power points, heater, cupboard housing hot water tank, doors to:

#### **Lounge/Diner**

Rear aspect UPVC double glazed window, light and power points, TV point, heater.



#### **Kitchen/Breakfast Room**

Side aspect UPVC double glazed window, range of fitted units at eye and base level, roll edged worktops, sink drainer unit, built-in oven and hob with extractor, space for washing machine and fridge/freezer. Breakfast bar, partly tiled walls.



#### **Bedroom**

Rear aspect UPVC double glazed window, light and power points, heater.

### **Bathroom**

Side aspect UPVC double glazed window, panel enclosed bath, wash hand basin, low level W.C, heater, partly tiled walls.



## ROOM DESCRIPTIONS

---

### Outside

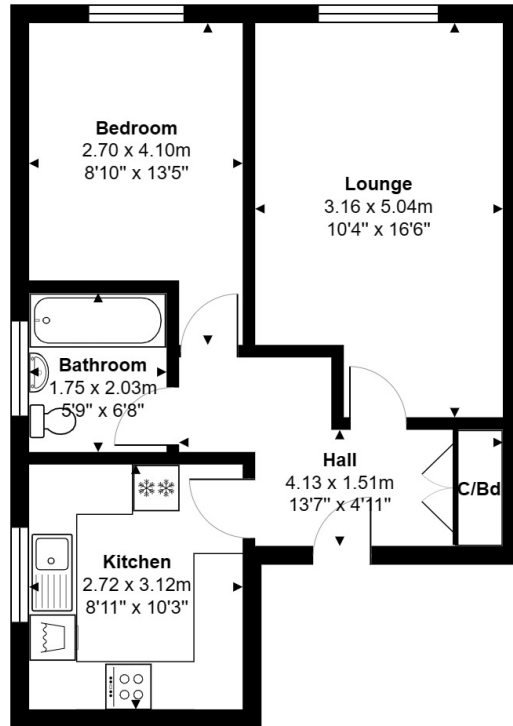
#### Communal Grounds, Parking & Garage

Well kept communal gardens, residents parking & garage in block to rear.



# FLOORPLAN

---



**Ground Floor**

Total Area: 45.9 m<sup>2</sup> ... 494 ft<sup>2</sup>

All measurements are approximate and for display purposes only.