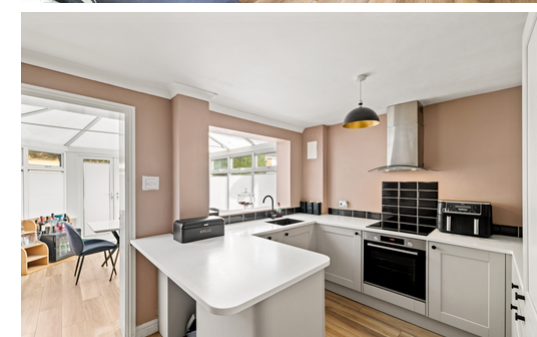


5 Fig Tree Walk The Street

EYTHORNE, Dover
CT15 4DN

£289,950 FREEHOLD

Draft Details...FOR SALE THROUGH BURNAP + ABEL... NO ONWARD CHAIN... Burnap + Abel are delighted to offer onto the market this fabulous three bedroom end of terrace family home located in the highly sought after Fig Tree Walk, The Street, Eythorne, Dover. The property is in beautiful condition throughout and has benefited from a loft conversion creating three double bedrooms. The accommodation boasts a lounge, modern kitchen/diner, three double bedrooms and a modern shower room. Additional benefits include a low maintenance rear garden with side access, allocated parking for two cars, double glazing and gas central heating. There are regular buses to Dover and Canterbury which is approximately thirteen miles away, there is also a railway station three miles away at the nearby village of Shepherdswell where trains operate between Dover and London. For your chance to view call sole agent Burnap + Abel on 01304 279107.



Lounge

14' 9" x 14' 5" (4.50m x 4.39m)

Kitchen

14' 9" x 9' 11" (4.50m x 3.02m)

Conservatory

11' 11" x 11' 4" (3.63m x 3.45m)

Bedroom Two

10' 6" x 8' 6" (3.20m x 2.59m)

Bedroom Three

10' 1" x 8' 6" (3.07m x 2.59m)

Shower Room

6' 3" x 5' 9" (1.91m x 1.75m)

Bedroom One

15' 2" x 14' 7" (4.62m x 4.45m)

Garden

Low maintenance garden with side access.

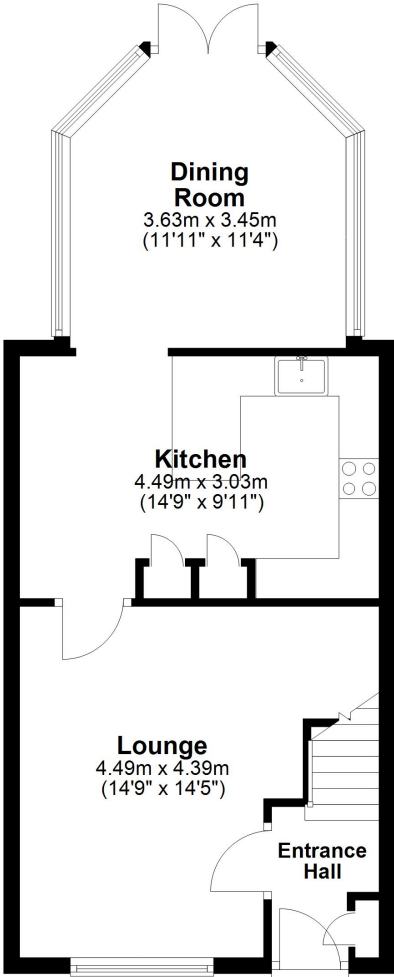
Parking

The vendor has informed us that the property has allocated parking for two cars.

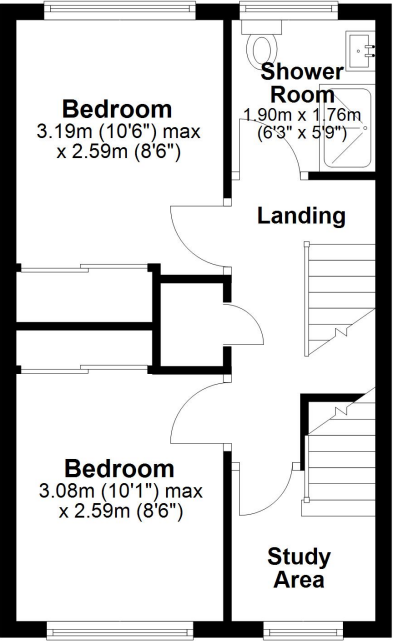
Area Information

Eythorne is a small rural village, located nearly seven miles from Dover town. Many of its residents commute to work in Dover or in Canterbury and is on hand for the main A256 commuting road to Thanet. There are regular buses to Dover and Canterbury which is approximately thirteen miles away, there is also a railway station three miles away at the nearby village of Shepherdswell where trains operate between Dover and London to both St Pancras and Victoria stations via Canterbury.

Ground Floor
Approx. 47.8 sq. metres (514.3 sq. feet)



First Floor
Approx. 34.4 sq. metres (370.3 sq. feet)



Second Floor
Approx. 20.8 sq. metres (223.6 sq. feet)

