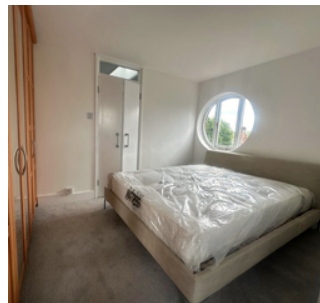
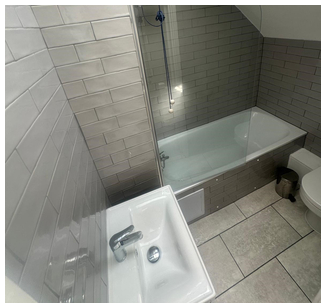




£2,100 PCM

FIELD COURT, FITZJOHNS AVENUE, LONDON. NW3

- Airy and Modern
- Seperate Kitchen and Reception
- One Double Bedroom
- Family Bathroom
- Furnished
- Bedroom Balcony
- Private Terrace Balcony
- Close to Local Amenities
- Hampstead Tube Station
- Available 26 February 2024



PROPERTY SUMMARY

A stunning and modern one bedroom flat in the heart of Hampstead. This property is airy and spacious situated on the top floor, brand new family bathroom with a bedroom balcony and private terrace with fitted wardrobe. Furnished and intergrated kitchen appliances.

This property has direct access to Hampstead Tube Station (Northern Line) approximity to Hampstead Village, with a wide range of shops, bars and restaurants that has a vibrant feel that has to offer.

Available Now.