



Paynes Park

Paynes Park | Hitchin | Hertfordshire | SG5 1EJ

www.stonegate-estates.co.uk



PAYNES PARK

Property Description

A two double bedroom retirement apartment situated within this highly regarded town centre development.

Set on the first floor of this ever popular development and with all principal rooms overlooking the rear communal gardens which helps to create a light and spacious apartment well placed for the communal lounge and laundry room. The well proportioned accommodation includes a long entrance hall with two double bedrooms and shower room together with an 'L' shaped lounge/dining room and adjacent kitchen. There is the practical benefit of electric storage heating and UPVC double glazed windows plus all the advantages of retirement living, this being a McCarthy and Stone development.

Whitings Court is well placed for access to the town centre (via the Arcade) where there is a variety of shops, including the nearby Waitrose store plus restaurants and bars within the town's attractive and historic centre. The apartment is set to the rear of the block and features the 24 hour Careline facility, a house manager and communal facilities that include the resident's lounge, laundry room and communal garden.

Overall a well planned apartment in a highly convenient setting.

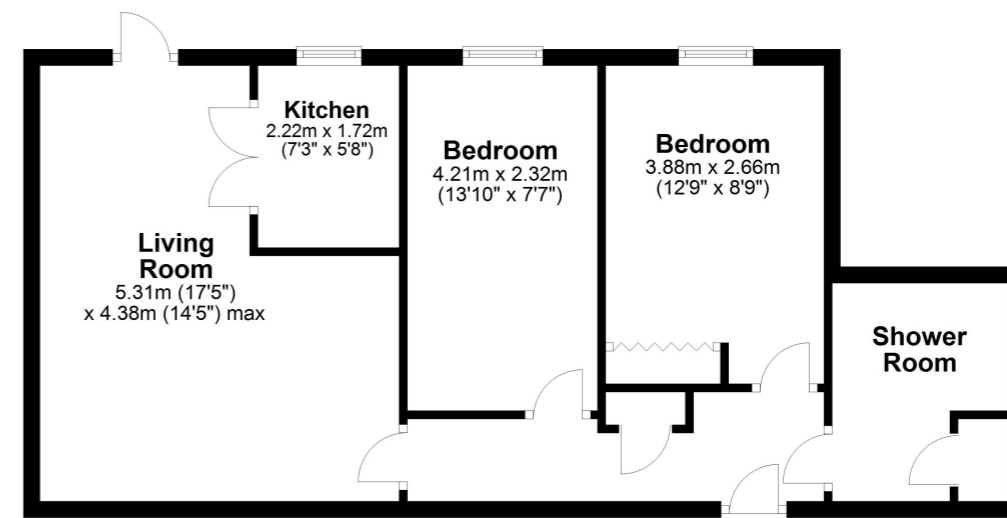
£275,000 Leasehold





Floor Plan

Approx. 56.9 sq. metres (612.1 sq. feet)



Total area: approx. 56.9 sq. metres (612.1 sq. feet)

All measurements shown are approximate and for guidance only. Garages and workshops are not included in any gross floor areas unless integral to the main building where they will be included.
Plan produced using PlanUp.



- Two Bedroom Retirement Apartment
- First Floor- close to lift
- Views over Communal Garden
- Shower Room
- Fitted Kitchen with Appliances
- Two Double Bedrooms
- Town Centre Location
- Residents Lounge
- Lease 108 years

EPC Rating:

Stonegate Estate Agents

01462 438979

sales@stonegate-estates.co.uk | www.stonegate-estates.co.uk

