



75 - 77 Jeddo Road, london , W12 9ED

**Cow & Co**  
LONDON



A beautifully presented two double bedroom apartment with private terrace in a newly built gated development in the heart of the Wendell Park area.

Finished to a high standard with sleek fully integrated kitchens with a high specification appliances, hardwood flooring and underfloor heating.

Jeddo Road is positioned a short stroll from Askew Village with its selection of local favourites such as The Ginger Pig, October 26 Artisan Bakery and Askew Wine. There are a number of excellent schools in the area plus Leiths School of Food and Wine and Kite Art Studios. A further fifteen-minute walk from Boot Court takes you to Chiswick High Road which offers an amazing array of shops, bars and award-winning restaurants.



- Two double bedroom apartment
- Private balcony to the rear of the building
- Gated development
- NEW Boutique Development
- Resident Parking Permit
- Luxury apartment
- High specification finish
- Prime Location in the Heart of Wendell Park

## Jeddo Road, London, W12

Approximate Area = 940 sq ft / 87 sq m

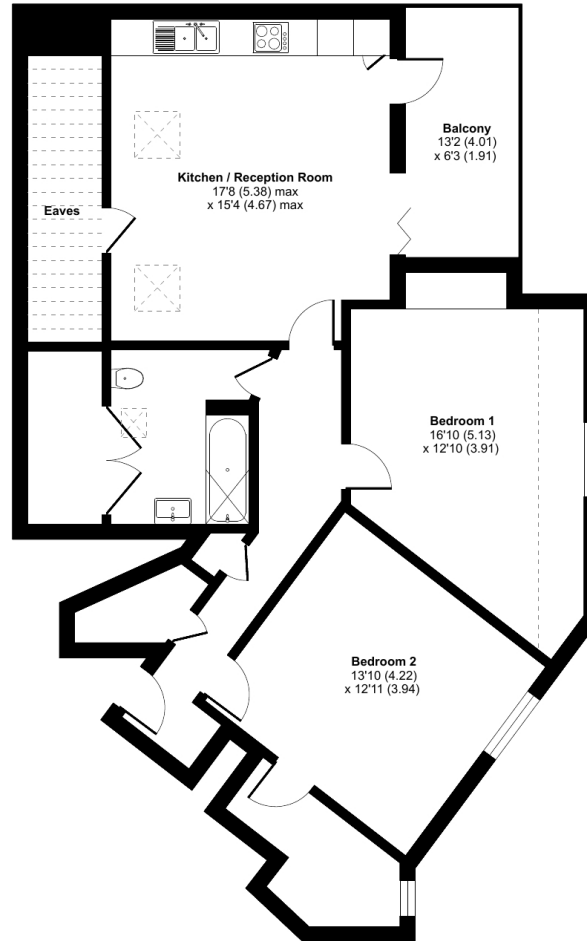
Limited Use Area(s) = 125 sq ft / 12 sq m

Total = 1065 sq ft / 99 sq m

For identification only - Not to scale



Denotes restricted  
head height



SECOND FLOOR



Floor plan produced in accordance with RICS Property Measurement Standards incorporating International Property Measurement Standards (IPMS2 Residential). © nchecon 2022. Produced for Cow & Co Properties Ltd. REF: 877678

Tel: 0208 065 0010  
Email: [thehub@cowandco-london.com](mailto:thehub@cowandco-london.com)  
Web: [cowandco-london.com](http://cowandco-london.com)

Agents note: All measurements are approximate and whilst every attempt has been made to ensure accuracy they are for general guidance only and must not be relied on. The fixture and fittings referred to have not been tested and therefore no guarantee can be given that they are in working order. Internal photographs are reproduced for general information and it must not be inferred that any item shown is included with the property.

**Cow & Co**  
LONDON