

## Wood Road, Shepperton, TW17 0DX

**£649,950**



- Detached Character House
- Sought After Residential Road
- Large Double Aspect Garage
- Drive For 6/7 Cars
- Potential To Extend (STPP)
- 3 Bedrooms
- Downstairs Shower Room and WC
- Double Aspect Loung/Diner

## 32 Wood Road

Approximate Gross Internal Area = 108.3 sq m / 1166 sq ft

Garage = 17.3 sq m / 186 sq ft

Total = 125.5 sq m / 1352sq ft

Shed = 9.9 sq m / 106 sq ft

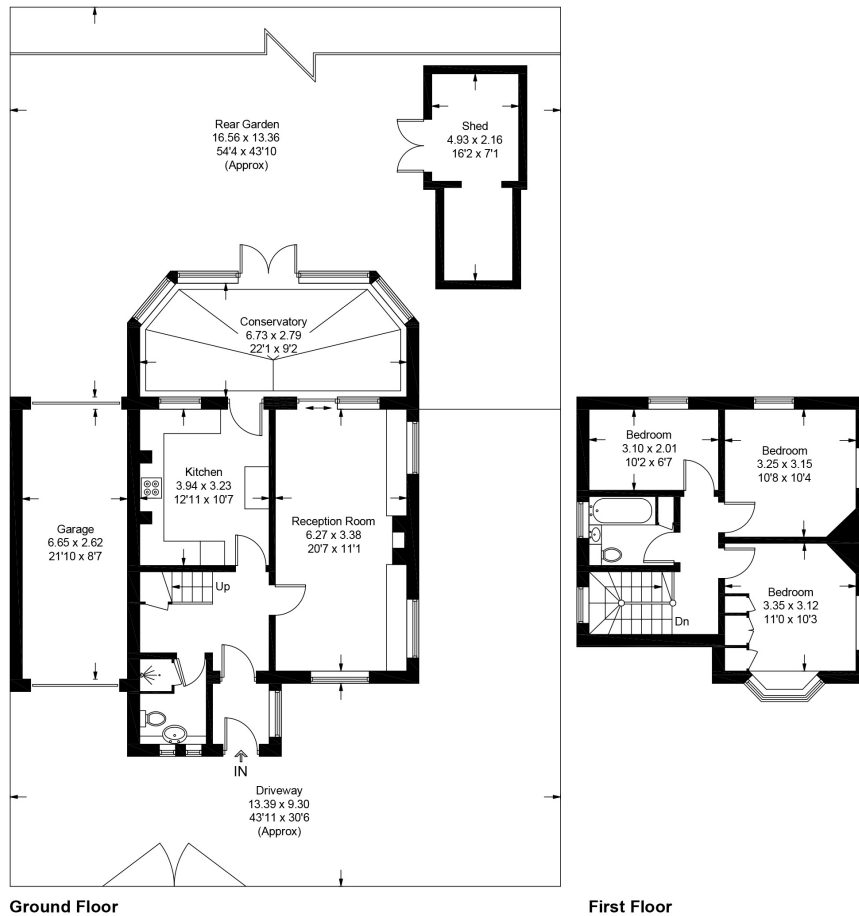
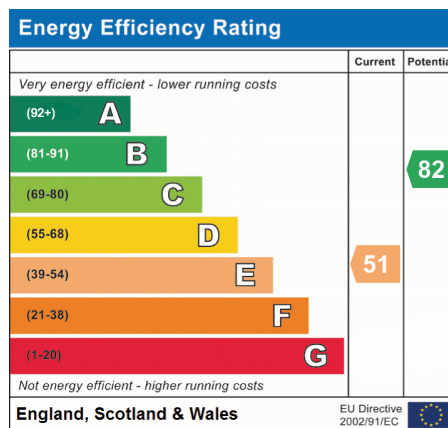


Illustration for identification purposes only, measurements are approximate, not to scale. Fourlabs.co © (ID1168774)



We have not tested the services or domestic appliances so we cannot verify that they are in working order. The buyer is advised to obtain verification from their solicitor or surveyor. These particulars form no part of any offer or contract and their accuracy cannot be guaranteed.