

## Rosse Gardens, , London, SE13 6TG

£300,000

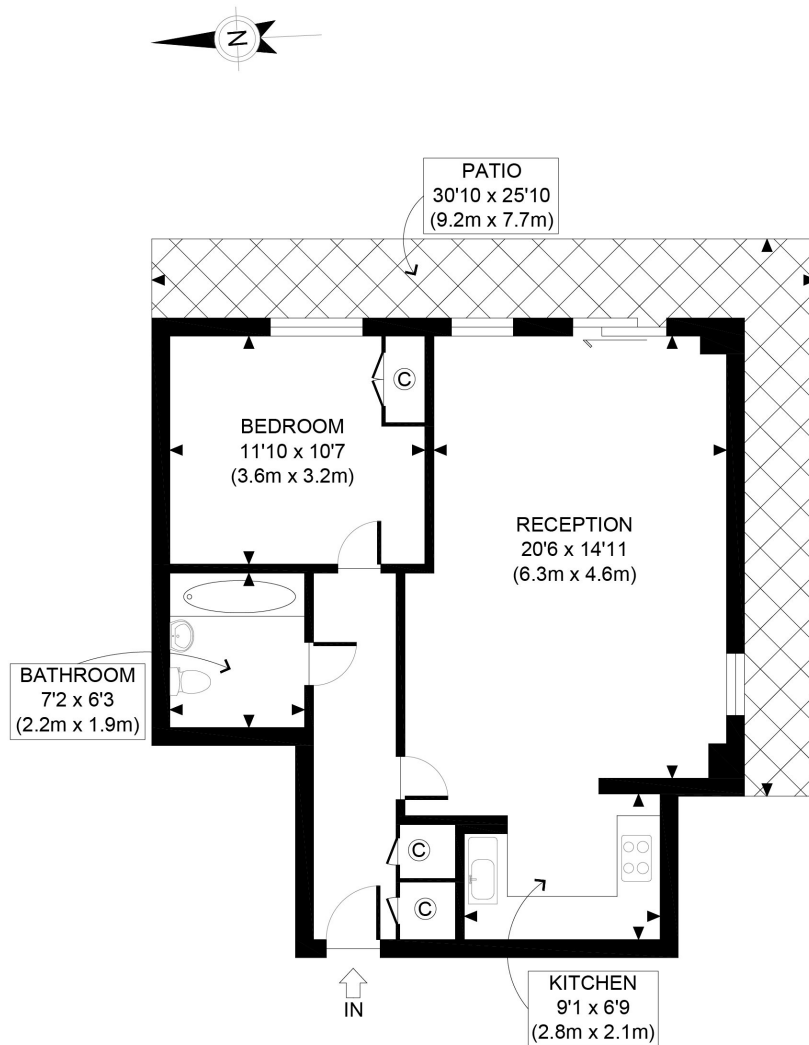
Fantastic dual aspect, larger than average one bedroom apartment situated on the popular Meridian South development. The 635 sq ft property benefits from a private wraparound patio overlooking communal gardens, allocated secure parking, an onsite Tesco Express, on site gymnasium and caretaker. The development is located a short walk from Hither Green train station with direct links to London Bridge.

- One bedroom
- Private patio
- Popular development
- Allocated parking

Viewing by appointment with 1st avenue.

**Call: 020 8293 8600**

1st avenue, 128 Metcalfe Court, West Parkside, London SE10 0EL  
email: [info@1stavenue.co.uk](mailto:info@1stavenue.co.uk)



GROUND FLOOR  
GROSS INTERNAL  
FLOOR AREA 635 SQ FT

APPROX. GROSS INTERNAL FLOOR AREA 635 SQ FT / 59 SQM

Disclaimer: Floor plan measurements are approximate and are for illustrative purposes only. While we do not doubt the floor plan accuracy and completeness, you or your advisors should conduct a careful, independent investigation of the property in respect of monetary valuation

Copyright **photoplan360**

Viewing by appointment with 1st avenue.

**Call: 020 8293 8600**

1st avenue, 128 Metcalfe Court, West Parkside, London SE10 0EL  
email: [info@1stavenue.co.uk](mailto:info@1stavenue.co.uk)