



## **Colesdale, Cuffley, Potters Bar, Hertfordshire, EN6**

**£980,000**

- **REFURBISHED HOME**
- **FOUR / FIVE BEDROOM HOME**
- **DECKING / PRIVATE GARDEN / TIMBER SHED**
- **PANORAMIC VIEWS OVER COUNTRYSIDE**
- **5 MINUTE WALK TO CUFFLEY PRIMARY SCHOOL**
- **SPLIT LEVEL**
- **BI-FOLDING DOORS**
- **SUPERB OPEN PLAN LOUNGE / DINER / KITCHEN**
- **0.5 MILE TO CUFFLEY TRAIN STATION**

108, High Street, Potters Bar, EN6 5AT

01707 245 555

[www.home-counties.com](http://www.home-counties.com)

# Colesdale, Cuffley, Potters Bar, Hertfordshire, . EN6

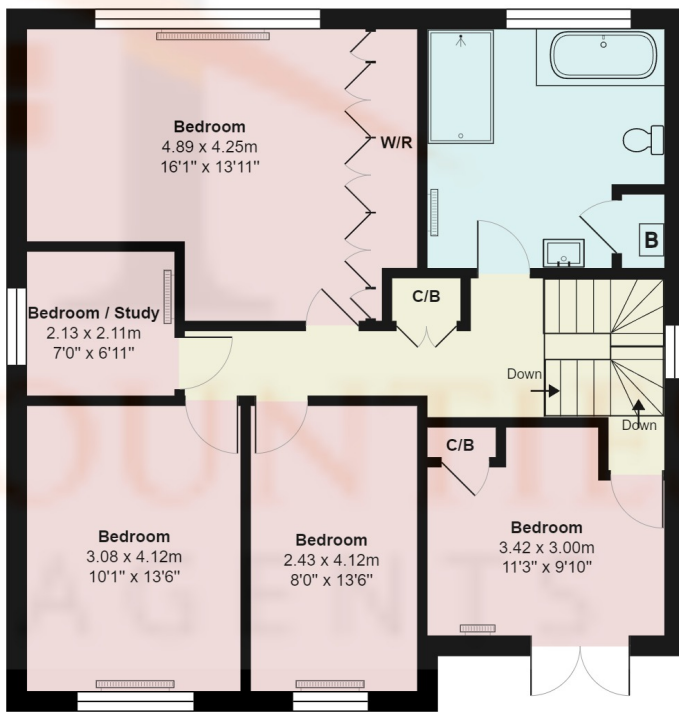
## £980,000 Freehold

OPEN DAY SATURDAY 30TH MARCH BY APPOINTMENT ONLY.

This stunning recently refurbished split level detached home is ideally set backing on to open fields with superb panoramic views over countryside, and just under 1 mile to the Village, with Mainline Train station with trains to Moorgate. The home features this superb open plan lounge kitchen diner, with modern fitted kitchen, oak worktops, breakfast bar, integrated appliances, American fridge freezer, full size rangemaster and bi-folding doors with breath-taking views. Other features include, downstairs cloakroom, plenty of storage space, a bedroom currently used as a gym, large bathroom featuring bath and walk in shower, plus Master bedroom and three further bedrooms



**Ground Floor**  
Area: 85.8 m<sup>2</sup> ... 923 ft<sup>2</sup>



**First Floor**  
Area: 85.1 m<sup>2</sup> ... 916 ft<sup>2</sup>

### Colesdale, Hertfordshire EN6

Total Area: 170.9 m<sup>2</sup> ... 1840 ft<sup>2</sup>

All measurements are approximate and for display purposes only

