



Tilehouse Street

Tilehouse Street | Hitchin | Hertfordshire | SG5 2DU

www.stonegate-estates.co.uk



TILEHOUSE STREET

Property Description

Are you tired of settling for less when it comes to finding a new home? Look no further than this Grade 2 listed townhouse, a gem waiting to be discovered in the heart of the town centre.

This three-storey property boasts three spacious double bedrooms, two family bathrooms, a cellar, and a separate one bedroom annexe, perfect for guests or as a private office space. The rear courtyard garden provides a lovely outdoor space to relax in, with plenty of room for al fresco dining or just soaking up the sun.

Conveniently located within walking distance to shops, restaurants, supermarkets, and good school catchment areas, this property offers a comfortable family home with easy access to major road and rail links. It's the perfect balance of convenience and tranquility for busy professionals and families alike.

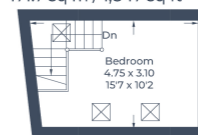
Don't miss out on the opportunity to view this Grade 2 listed character property in excellent condition. Contact us now to book your viewing and start picturing yourself in your new dream home.

£695,000 Freehold





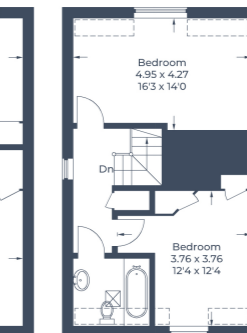
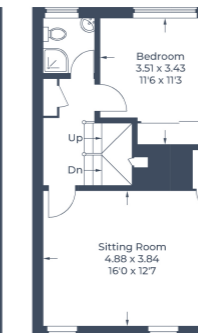
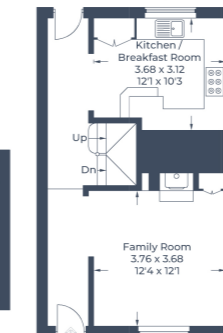
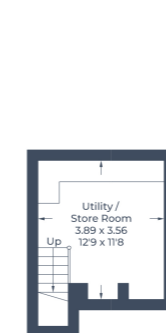
Approximate Gross Internal Area
 Lower Ground Floor = 14.5 sq m / 156 sq ft
 Ground Floor = 43.5 sq m / 468 sq ft
 First Floor = 43.2 sq m / 465 sq ft
 Second Floor = 43.2 sq m / 465 sq ft
 Annexe Ground Floor = 13.6 sq m / 146 sq ft
 Annexe First Floor = 13.7 sq m / 147 sq ft
 Total = 171.7 sq m / 1,847 sq ft



Annexe - Ground Floor
 (Not Shown In Actual Location / Orientation)

Annexe - First Floor

□ = Reduced headroom below 1.5m / 5'0"



Lower Ground Floor

Ground Floor

First Floor

Second Floor

Illustration for identification purposes only,
 measurements are approximate, not to scale.
 © CJ Property Marketing Produced for Stonegate Estates



- Town Centre Location
- Sought After Address
- Accommodation Over Three Floors
- Cellar
- Two Reception Rooms
- Three Double bedrooms In Main House
- Two Bathrooms In Main House
- Independent One Bedroom Annexe
- Bathroom IN Annexe
- Grade 2 Listed

EPC Rating:

Stonegate Estate Agents

01462 438979

sales@stonegate-estates.co.uk | www.stonegate-estates.co.uk

