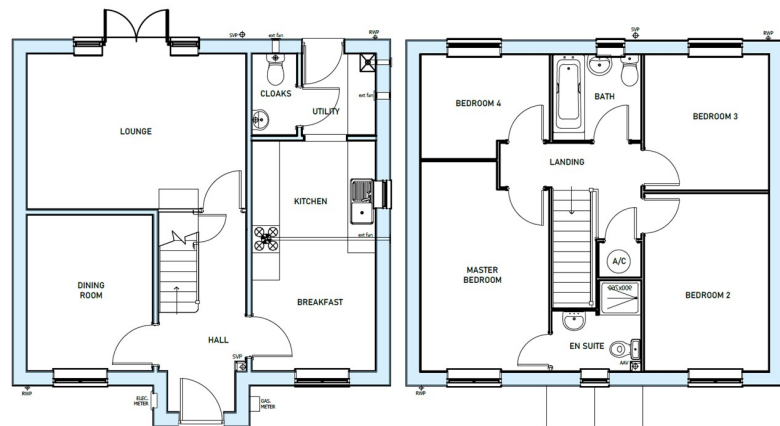




The Kingston Plot 1, Damgate, Holbeach, Lincolnshire PE12 7AX

£355,000



*** THE KINGSTON *** Putters Place features 49 beautifully designed homes, ranging from two to five bedroom properties, offering a diverse selection to suit various needs and lifestyles. Phase 1 of the residential development at Damgate, Holbeach, will combine modern architectural styles with spacious, comfortable interiors, and high-quality finishes. Designed for energy efficiency and sustainability, each home also includes ample outdoor space, perfect for families and individuals alike. Located in a peaceful, semi-rural setting, the development is close to local amenities, schools, and transport links, providing a perfect blend of tranquil living with convenient access to essential services.

HOLBEACH

The town of Holbeach is located 8.1 miles East of Spalding and 24 miles north of the city of Peterborough, on the A17. The town is well serviced with a wide variety of shops, public houses and restaurants as well as the very popular Holbeach College. It has a wide range of schools and the Holbeach university academy =.

SPECIFICATION

All plots include EV chargers, Solar panels and Waste water recovery system.

DOOR INTO:

ENTRANCE HALL

Stairs to first floor accommodation with cupboard under.

DINING ROOM

Window to front.

LOUNGE

French doors to the rear with windows either side.

KITCHEN / BREAKFAST ROOM

Window to front and side. Opening to:

UTILITY ROOM

Door to garden.

CLOAKROOM

To be fitted with a two piece suite comprising wash hand basin and WC. Extractor fan.

LANDING

Airing cupboard. Doors to.

BEDROOM ONE

Window to front. Door to:

EN SUITE

To be fitted with a three piece suite comprising shower cubicle, wash hand and WC. Window to the front.

BEDROOM TWO

Window to front.

BEDROOM THREE

Window to rear.

BEDROOM FOUR

Window to rear.

BATHROOM

To be fitted with a three piece suite comprising bath, wash hand basin and WC. Window to rear.

OUSIDE

Driveway leading to a single garage with EV charger.

FLOORPLAN

The floor plan is for illustrative purposes only. Fixtures and fittings do not represent the current state of the property. Not to scale and is meant as a guide only.

AGENT NOTE

Please note that this property is currently under construction and descriptions are applicable to the finished property.

