



52 Appleton Road
Widnes, WA8 6EX



0151 424 5100
info@mylerestates.com



 MYLER&Co

Appleton Road

Widnes, WA8 6EX

£175,000

This immaculate terraced house, ideal for first-time buyers and families, features three bedrooms, a modern open-plan kitchen, a spacious reception room with a fireplace, and is situated in a sought-after location with excellent transport links, nearby schools, and abundant green spaces.



 MYLER&Co



Ground Floor

Entrance Hall

Lounge / Dining Room

7.55m x 3.65m (24' 9" x 12' 0")

Kitchen

First Floor

Stairs & Landing

Bedroom One

4.67m x 3.55m (15' 4" x 11' 8")

Bedroom Two

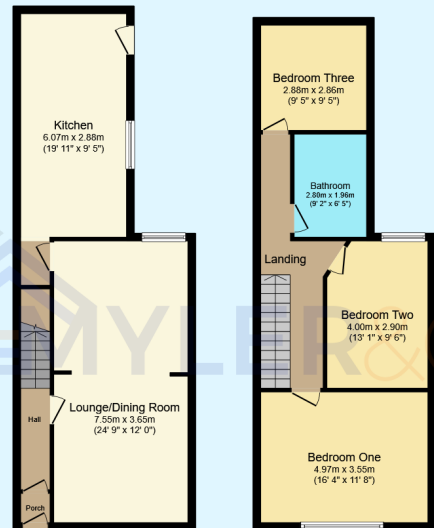
4.00m x 2.94m (13' 1" x 9' 8")

Bedroom Three

2.88m x 2.86m (9' 5" x 9' 5")



52 Appleton Road, Widnes, WA8 6EX

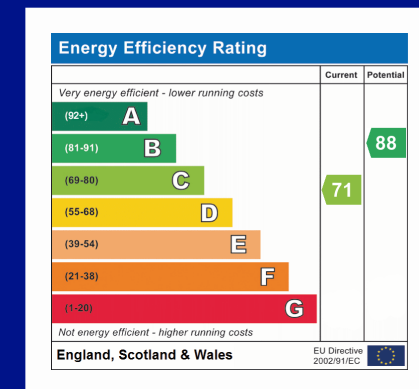


Ground Floor
Floor area 52.6 sq.m. (566 sq.ft.)

First Floor
Floor area 51.7 sq.m. (556 sq.ft.)

Total floor area: 104.3 sq.m. (1,122 sq.ft.)

This floor plan is for illustrative purposes only. It is not drawn to scale. Any measurements, floor areas (including any total floor area), openings and orientations are approximate. No details are guaranteed, they cannot be relied upon for any purpose and do not form any part of any agreement. No liability is taken for any error, omission or misstatement. A party must rely upon its own inspection(s). Powered by www.Propertybox.io



Myler & Co

77, Albert Road, Widnes, Cheshire, WA8 6JS

0151 424 5100

info@mylerestates.com