

# FOR SALE

---

Eridge Road,  
Chiswick, W4

---

End of Terrace House  
Chiswick

---

£1,350,000 fh

---

3  2  2 



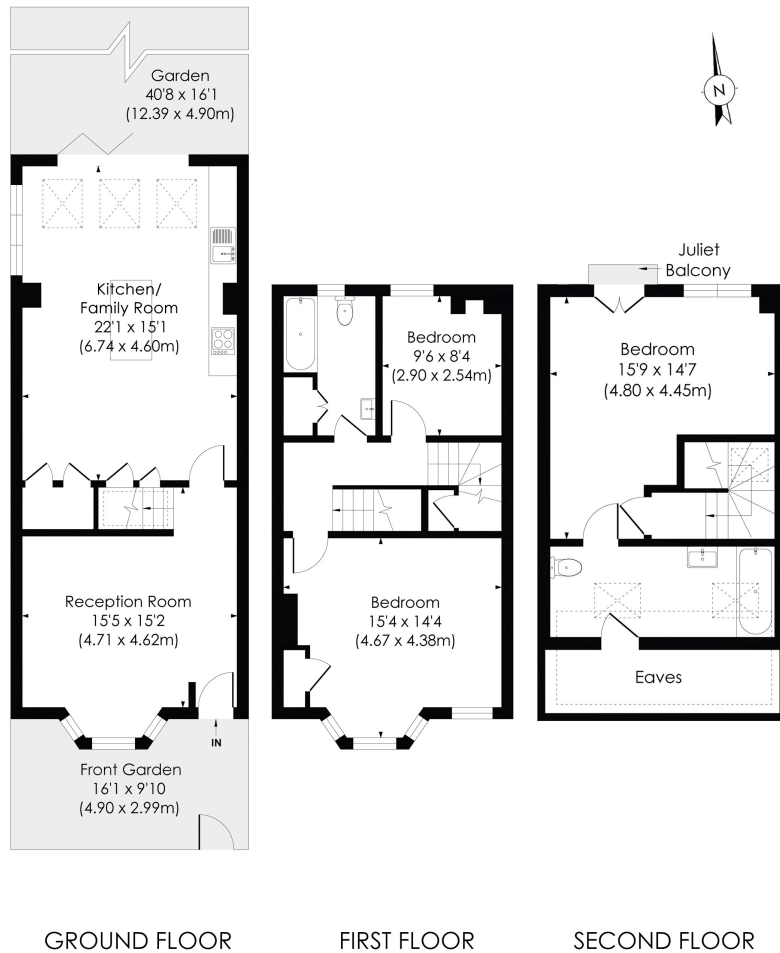
**horton  
andgarton**

SALES / LETTINGS / PROPERTY MANAGEMENT

[hortonandgarton.co.uk](https://hortonandgarton.co.uk) | Sales 020 3989 6464 | Lettings 020 3989 5454

161 Chiswick High Road, London, W4 2DT





### ERIDGE ROAD, W4

Approx. Gross Internal Floor Area  
**1432 Sq'/133.05 SqM** (Including Reduced Height)  
**1322 Sq'/122.86 SqM** (Excluding Reduced Height)

© Pixangle Property Marketing Ltd. info@pixangle.com Tel: 0208 870 2118

**horton  
andgarton**

This floor plan has been prepared for the purpose of illustration only in accordance with the latest RICS code of measuring practice and is not to scale. All measurements and areas are approximate and whilst every effort has been made to ensure the accuracy of the plan contained here, no responsibility is taken for any error, omission or misstatement.



End of terrace family house | Four bedrooms - Two bathrooms | XXX Sq' - XXXX SqM | xx' garden | EPC rating D | Bedford Park borders



hortonandgarton.co.uk  
 Sales 020 3989 6464  
 Lettings 020 3989 5454

161 Chiswick High Road, London, W4 2DT