



New Drum Street, London, E1 7AS

Cow & Co
LONDON



GUIDE PRICE £500,000 - £600,000 This fantastic one double bedroom second floor apartment is located in the much sought after Wiverton Tower which offers a host of amenities to cater for your every need. There is a 24 hour concierge service as well as a resident's gymnasium and a magnificent communal roof terrace which provides stunning views of the London City skyline.

The property itself comprises of an entrance hall, open plan reception/diner/fitted kitchen, winter garden, double bedroom and a bathroom/wc.

Wiverton Tower is situated adjacent to Aldgate East (Underground) station and is within close proximity to the iconic Spitalfields Market as well as the busy hub of Liverpool Street and its superb selections of bars, restaurants and cafes.

Viewing is highly recommended.

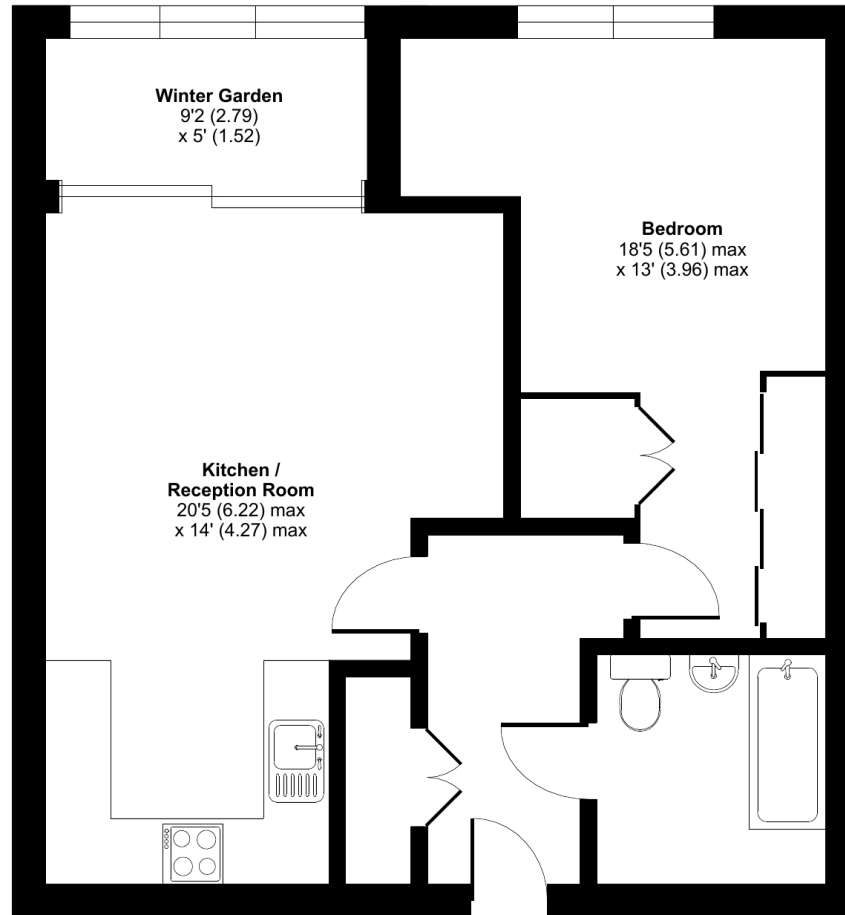


- Double bedroom with wardrobes
- Open plan reception and kitchen/dining area
- 24 Hour concierge service
- Residents Gym and leisure facilities
- Great location
- Modern bathroom/wc
- Very close to Stations
- Winter Garden and communal roof terrace

New Drum Street, London, E1

Approximate Area = 614 sq ft / 57 sq m

For identification only - Not to scale



SECOND FLOOR



Floor plan produced in accordance with RICS Property Measurement Standards incorporating International Property Measurement Standards (IPMS2 Residential). © nchecon 2023. Produced for Cow & Co Properties Ltd. REF: 1050349

Tel: 0208 065 0010
Email: thehub@cowandco-london.com
Web: cowandco-london.com

Agents note: All measurements are approximate and whilst every attempt has been made to ensure accuracy they are for general guidance only and must not be relied on. The fixture and fittings referred to have not been tested and therefore no guarantee can be given that they are in working order. Internal photographs are reproduced for general information and it must not be inferred that any item shown is included with the property.

Cow & Co
LONDON