

# TO LET

Ethelden Road,  
Shepherds Bush, W12

Terraced House  
Shepherds Bush

£4,400 pcm

4  2  2 

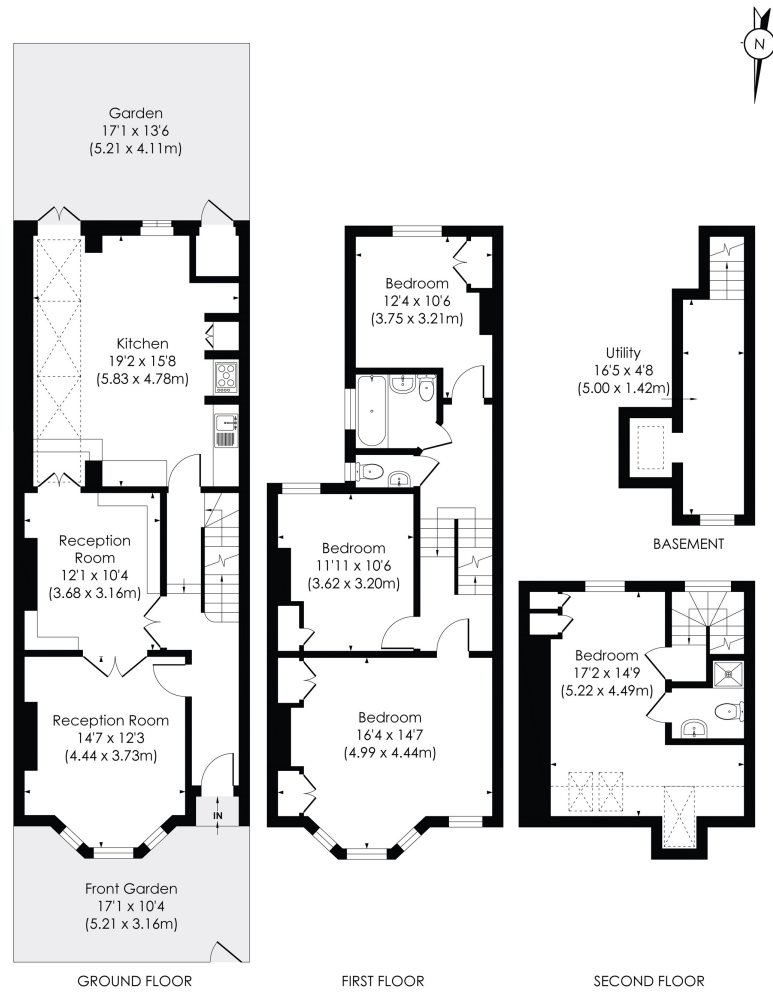


**horton  
andgarton**

SALES / LETTINGS / PROPERTY MANAGEMENT

hortonandgarton.co.uk | Sales 020 8819 0510 | Lettings 020 8819 0511  
172 King Street, Hammersmith, W6 0QU





### ETHELDEN ROAD, W12

Approx. Gross Internal Floor Area  
**1708 Sq' / 158.70 SqM (Incl. RHH)**  
**1606 Sq' / 149.19 SqM (Excl. RHH)**

**horton  
andgarton**

© Pixangle Property Marketing Ltd. info@pixangle.com Tel: 0208 870 2118

This floor plan has been prepared for the purpose of illustration only in accordance with the latest RICS code of measuring practice and is not to scale. All measurements and areas are approximate and whilst every effort has been made to ensure the accuracy of the plan contained here, no responsibility is taken for any error, omission or misstatement.



Four bedroom terraced house | Two bathrooms - Guest WC | Unfurnished | Period charm and character throughout | EPC rating C | Shepherd's Bush



hortonandgarton.co.uk  
 Sales 020 8819 0510  
 Lettings 020 8819 0511

172 King Street, Hammersmith, W6 0QU