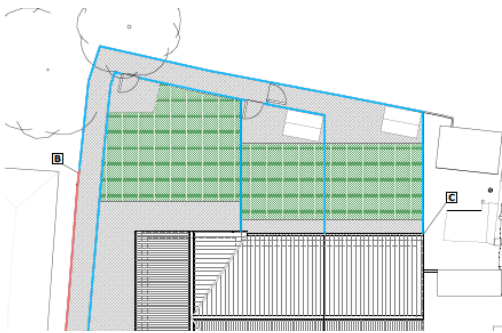




PROPOSED STREET SCENE



Plot 3, Stevens Close, Potters Bar, Hertfordshire, EN6

£785,000

- NEW BUILD 2022
- WREN MODERN FITTED KITCHEN
- ELECTRIC VEHICLE CHARGING POINTS
- THREE BEDROOMS
- PARKING X2
- DAME ALICE OWENS CATCHMENT
- EN-SUITE TO MASTER BEDROOM
- UNDERFLOOR HEATING
- FINISHED TO A HIGH SPEC AND STANDARD
- CAT 6 CABLES THROUGHOUT

Plot 3, Stevens Close, Potters Bar, Hertfordshire, . EN6

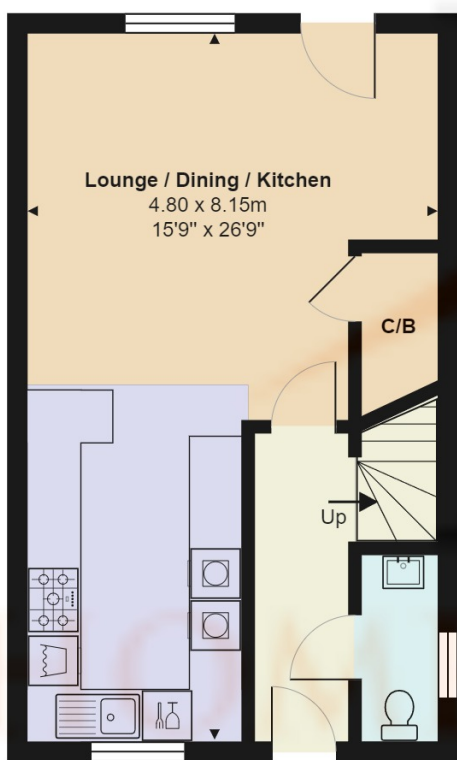
£785,000 Freehold

OPEN DAY SATURDAY 3RD SEPTEMBER - BY APPOINTMENT ONLY

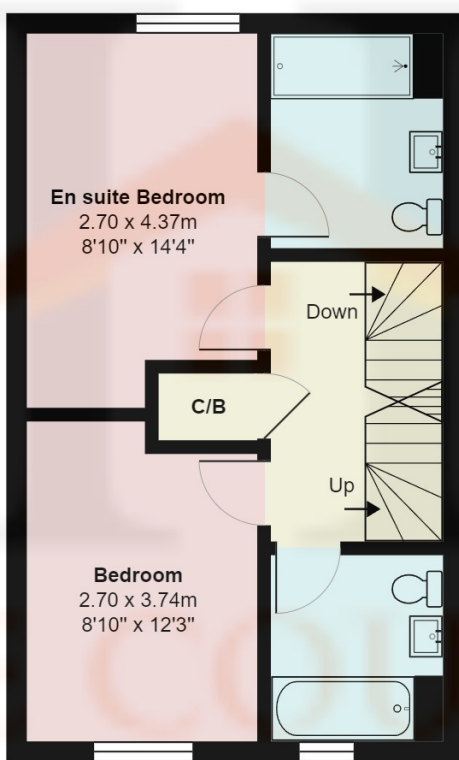
THREE LUXURY NEW BUILD HOMES IDEALLY LOCATED IN THE DAME ALICE OWENS CATCHMENT AREA.

Tucked away in this quiet turning we are pleased to offer Three New Build luxury homes. Plot 3, End of terrace family home with luxury living featuring open plan kitchen lounge diner, with modern fully fitted kitchens from Wren with integrated Bosch appliances and Samsung Family Hub Fridge Freezer, downstairs toilet and parking for two cars with the added benefit of electric vehicle charging points and CAT 6 cabling throughout. The first floor benefits from two double bedrooms one with en-suite and a modern fully tiled family bathroom, and the 2nd floor features master bedroom with en-suite shower room.

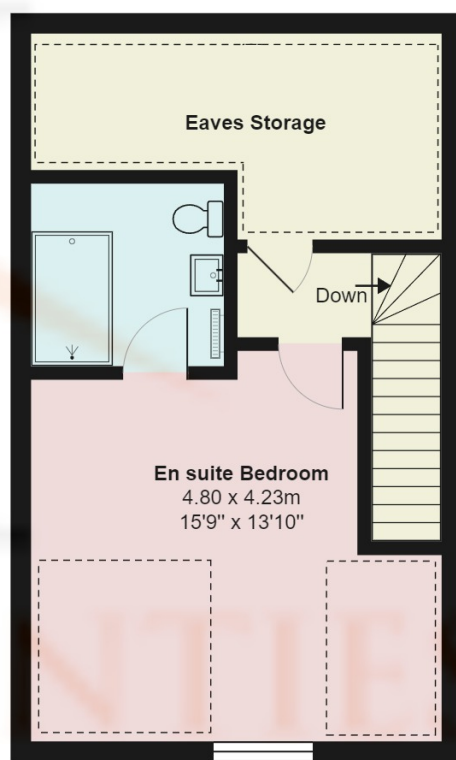
The gardens benefit from access via the rear, via gated side passage.



Ground Floor



First Floor



Second Floor



Plot 3, Stevens Close EN6

Total Area: 119.7 m² ... 1289 ft²

All measurements are approximate and for display purposes only

Reduced Ceiling Height

