



HILTON KING & LOCKE

SPECIALISTS IN PROPERTY



Thorney Lane South, Richings Park, Iver, Buckinghamshire. SL0 9AD.

£950,000 Freehold

A beautifully presented and spacious four/five bedroom detached house, ideally situated in Richings Park and only a short walk to Iver Station and therefore Crossrail.

A viewing is highly recommended in order to fully appreciate this stunning home, which currently comprises of an entrance hall which leads through to a triple aspect living room that has a feature fireplace, and a wonderfully spacious kitchen/dining/family room with central island, granite work surfaces and French doors that lead out to the garden. There is also a study, utility room and a gym/bedroom five. A cloakroom completes the ground floor accommodation.

To the first floor there are four bedrooms, including a spacious rear aspect master bedroom with ensuite, plus a family bathroom.

The property has plenty of off-street parking to the front, and a large level garden to the rear, which is mainly laid to lawn with a decking area and entertaining space.

THE AREA



The property is located within walking distance to various local amenities and Iver Station, operated by the Great Western Railway to London, Paddington and Oxford, and now connected to Crossrail, which greatly reduces journey times.

Central London is also easily accessible by road via the M40, A40, M4 and M25 and Heathrow Airport is situated only 5 miles away.

Iver has an excellent choice of state and independent schools. The area is well served for sporting facilities and the countryside, including Black Park and Langley Park.

The larger centres of Gerrards Cross and Uxbridge are also close by where there are a large selection of shops, supermarkets, restaurants, and entertainment facilities including a multiplex cinema.



Important Notice

Particulars: These particulars are not an offer or contract, nor part of one. You should not rely on statements by Hilton King & Locke Ltd in the particulars or by word of mouth or in writing as being factually accurate about the property, its condition or its value. Hilton King & Locke Ltd does not have any authority to make any representations about the property, and accordingly any information given is entirely without responsibility on the part of the agents, seller(s) or lessor(s).

Photographs etc: The photographs show only certain parts of the property as they appeared at the time they were taken. Areas, measurements and distances given are approximate only.

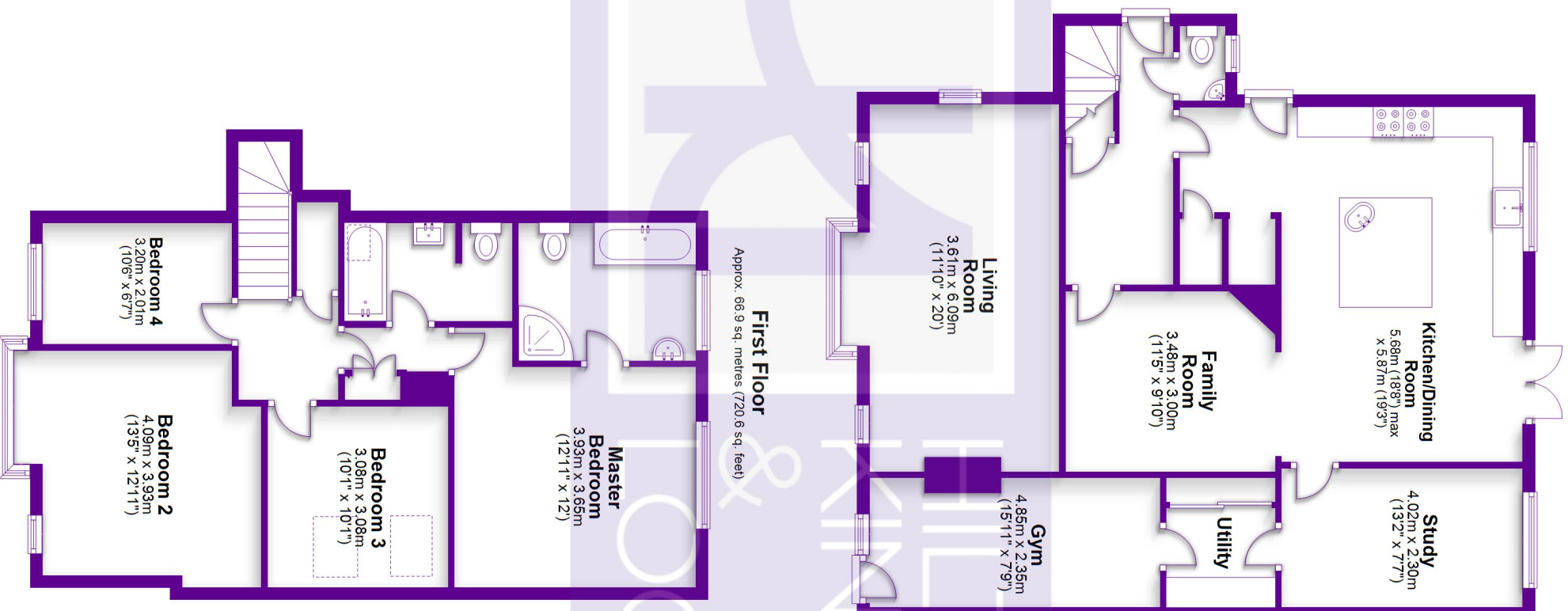


23 High Street
Iver Buckinghamshire SL0 9ND

Tel: 01753 650033
iver@hklhome.co.uk

Ground Floor

Approx. 95.2 sq. metres (1024.4 sq. feet)



First Floor

Approx. 66.9 sq. metres (720.6 sq. feet)

Total area: approx. 162.1 sq. metres (1745.0 sq. feet)