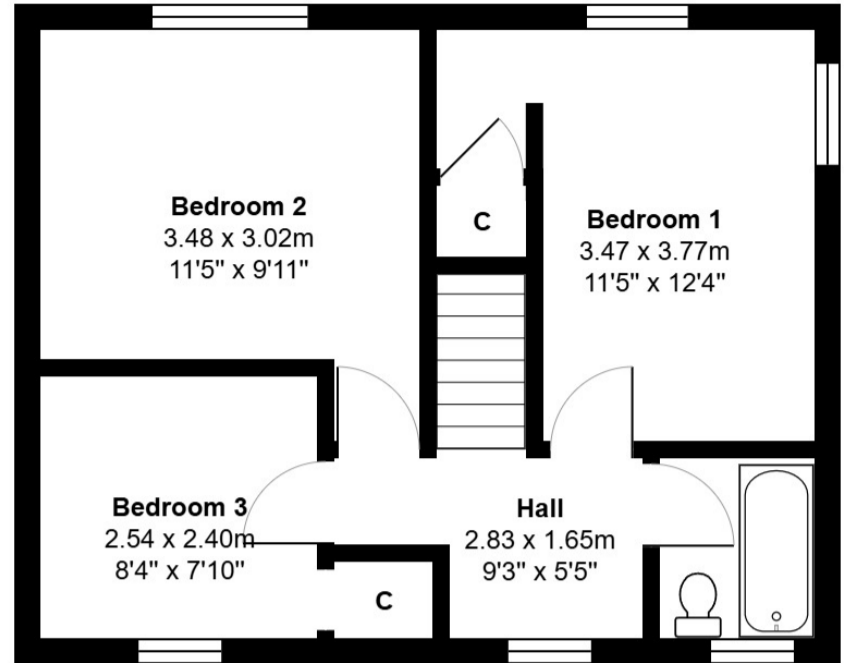


Ground Floor



First Floor

Total Area: 81.0 m² ... 872 ft²

All measurements are approximate and for display purposes only



35a, High Street, Hemel Hempstead,
Hertfordshire, HP3 0HG
T: 01442 831500
F: 01442 831300
E: info@whitewoodproperties.co.uk
W: <http://www.whitewoodproperties.co.uk>



Alexandra Road, Sarratt

£499,950

A rare opportunity to acquire a spacious three bedroom semi detached house in need of refurbishment located in a quiet road within a short walk of the village green in Sarratt. The property has great potential for a side and rear extension and a possible loft conversion, subject to obtaining the relevant planning permissions. There is a large south westerly facing rear garden, garage and a driveway for two cars with potential to create further parking. No upper Chain. Probate has been granted.

Ground Floor

Entrance Porch

Double glazed front door, double glazed windows. Door leading to

Entrance Hall

Stairs leading to first floor, radiator, doors leading to

Cloak room/WC

Window to side, close coupled WC, wash hand basin.

Sitting Room

A double aspect room with sliding patio doors leading to the rear garden, internal door leading to the Kitchen.

Kitchen diner

Doors leading to entry hallway, garden and sitting room. Window

to side, built in larder cupboard, understairs storage cupboard, stainless steel sink with wall and base units.wall mounted Vaillant gas boiler.

First Floor

Landing

Window to rear, airing cupboard, doors leading to

Bedroom One

Window to front

Bedroom Two

Window to front and side. Built in wardrobe.

Bedroom Three

Window overlooking the rear garden, built in wardrobe.

Bathroom

Window to side, panelled bath, pedestal wash hand basin.

Outside

To the front and Side

There is off road parking on the front and side driveway for two vehicles and potential to create additional parking by removing the front grass area.

Garage

With up and over metal doors.

Rear Garden

A large rear garden with a south westerly aspect, mainly laid to lawn with mature hedging, paved patio area, brick built garden storage building.

www.whitewoodproperties.co.uk



W **W** **WHITEWOOD**
ESTATES
COUNTRY HOMES & VILLAGE PROPERTIES

