

maloco
mowat
parker

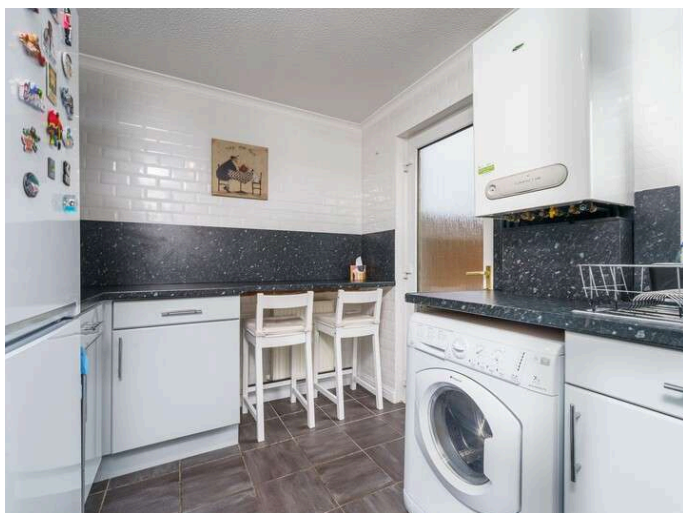
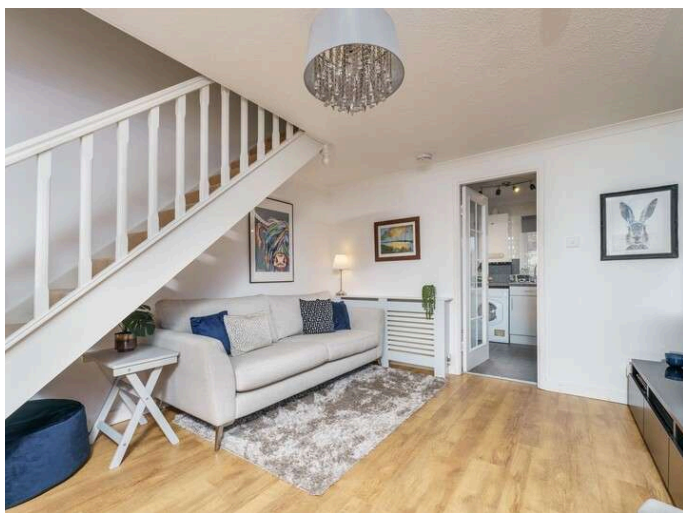
Solicitors & Estate Agents

50

Glen Nevis Drive, DUNFERMLINE, KY11 4QT



Working harder for you



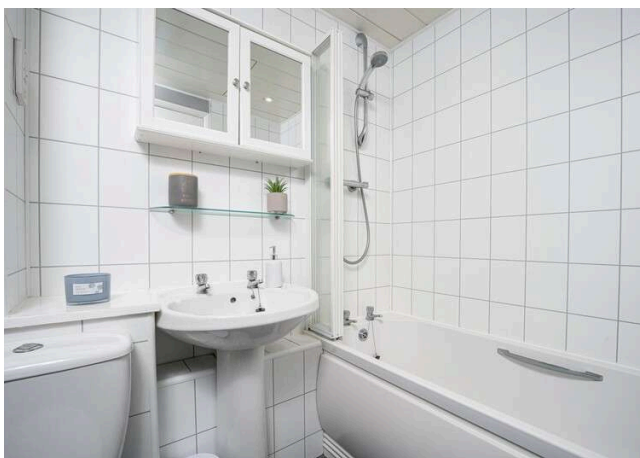
2 bedrooms



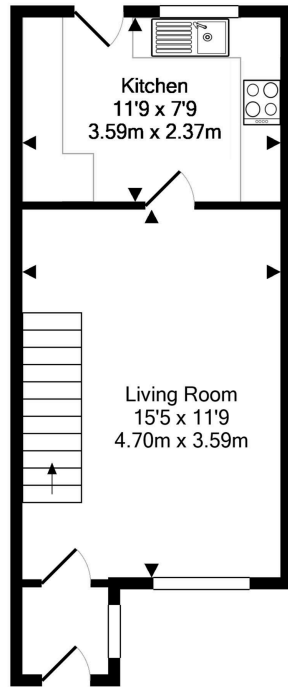
1 public



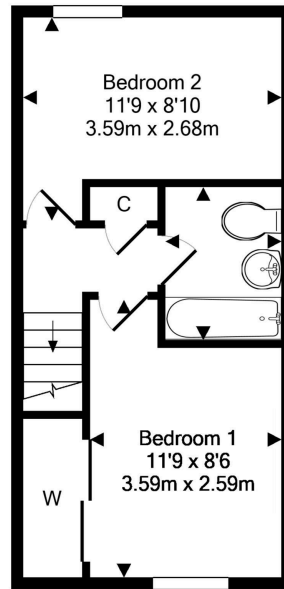
1 bathroom



- + A spacious and well presented, two-bedroom terrace villa offered to the market in move in condition
- + An ideal first-time home with amenities close to hand including various shops, restaurants and leisure facilities
- + Transport links include the M90 motorway as well as various railway stations within Dunfermline and nearby Inverkeithing and Rosyth
- + Residential parking across from the property
- + Entrance vestibule leading through to a bright front facing lounge with ample room for free standing furniture
- + Modern well-equipped kitchen with a good range of floor and wall mounted storage, good worktop space and room for free standing appliances
- + Bathroom with WC, wash hand basin and shower over bath
- + Two double bedrooms with built in wardrobe in Bedroom one.
- + Private, and easy maintenance gardens to the rear
- + Walking distance of Pitreavie Golf Club and various walking routes
- + Gas central heating and double glazing
- + Viewing comes highly recommended to appreciate this perfect first-time home in a sought-after residential location



Ground Floor
Approx. Floor
Area 275 Sq.Ft.
(25.5 Sq.M.)



1st Floor
Approx. Floor
Area 259 Sq.Ft.
(24.0 Sq.M.)



Total Approx. Floor Area 533 Sq.Ft. (49.5 Sq.M.)

Whilst every attempt has been made to ensure the accuracy of the floor plan contained here, measurements of doors, windows, rooms and any other items are approximate and no responsibility is taken for any error, omission, or mis-statement. This plan is for illustrative purposes only and should be used as such by any prospective purchaser. The services, systems and appliances shown have not been tested and no guarantee as to their operability or efficiency can be given

Made with Metropix ©2020

Living Room	4.70 m x 3.59 m / 15'5" x 11'9"
Kitchen	3.59 m x 2.37 m / 11'9" x 7'9"
Bedroom 1	3.59 m x 2.59 m / 11'9" x 8'6"
Bedroom 2	3.59 m x 2.68 m / 11'9" x 8'10"
Bathroom	1.97 m x 1.69 m / 6'6" x 5'7"



Sharing is caring!

6/8 Bonnar Street,
Dunfermline KY12 7JR

T: 01383 629720 F: 01383 621333, DX DF69

espc

W: maloco.co.uk