



**Strode Road
Clevedon
Somerset
BS21 6UR**

Offers in Excess of £117,000

bettermove

Strode Road Clevedon

Bettermove are delighted to welcome to the market this charming two bedroom park home in Clevedon.

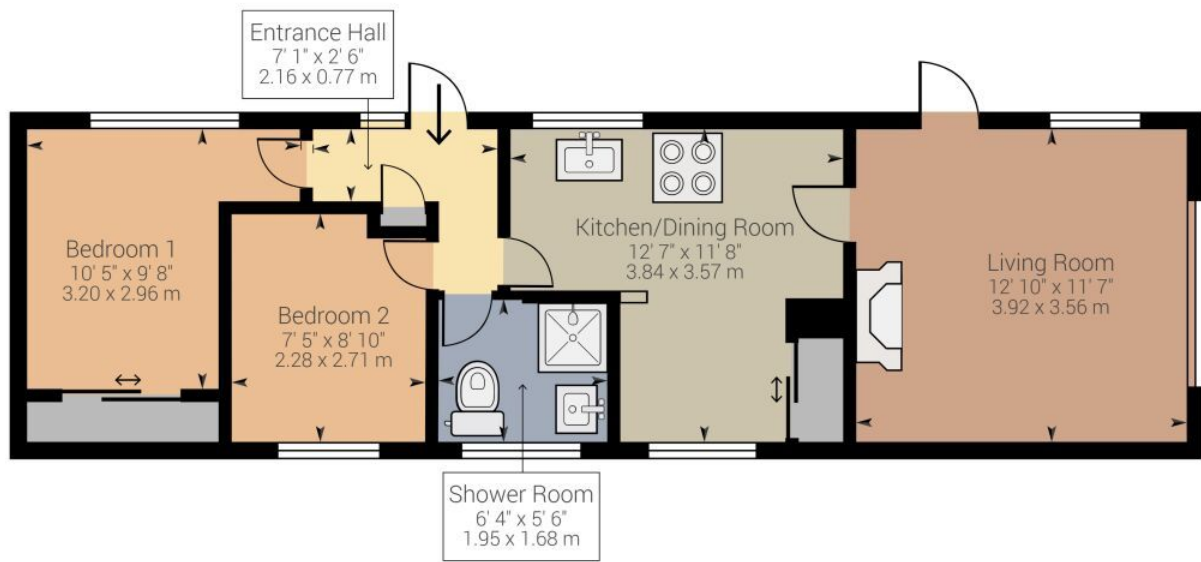
The property benefits from being sold with no forward chain. It is suitable for over 55s only.

The interior of this well-presented property consists of a spacious lounge, open plan kitchen/diner, two bedrooms and a shower room. There is off street parking for up to two vehicles.

Situated in the popular seaside town of Clevedon, the property is close to a range of local amenities, including shops, supermarkets, restaurants and pubs. Excellent transport links can be found from the M5, Yatton and Nailsea & Backwell rail stations.

This exciting opportunity is not to be missed! All enquiries can be made through Bettermove on 0330 004 0050.





Approximate net internal area: 503.63 ft² / 46.79 m²

While every attempt has been made to ensure accuracy, all measurements are approximate, not to scale. This floor plan is for illustrative purpose only and should be used as such by any prospective tenant or purchaser.

Powered by Giraffe360



20-22 Bridge End, Leeds, LS1 4DJ
t: 0330 004 0050 e: hello@bettermove.co.uk
www.bettermove.co.uk