



Ashmore Road, Maida Vale, W9

£2,950
pcm



Ashmore Road, Maida Vale, W9

A recently refurbished and beautifully presented two double bedroom, two bathroom apartment situated on the top floor of a period building benefiting from an expansive open plan kitchen/reception room.

Ashmore Road is conveniently located just 0.2 miles from Queens Park station (Bakerloo line) and the local amenities, shops and restaurants that can be found on Salusbury Road.

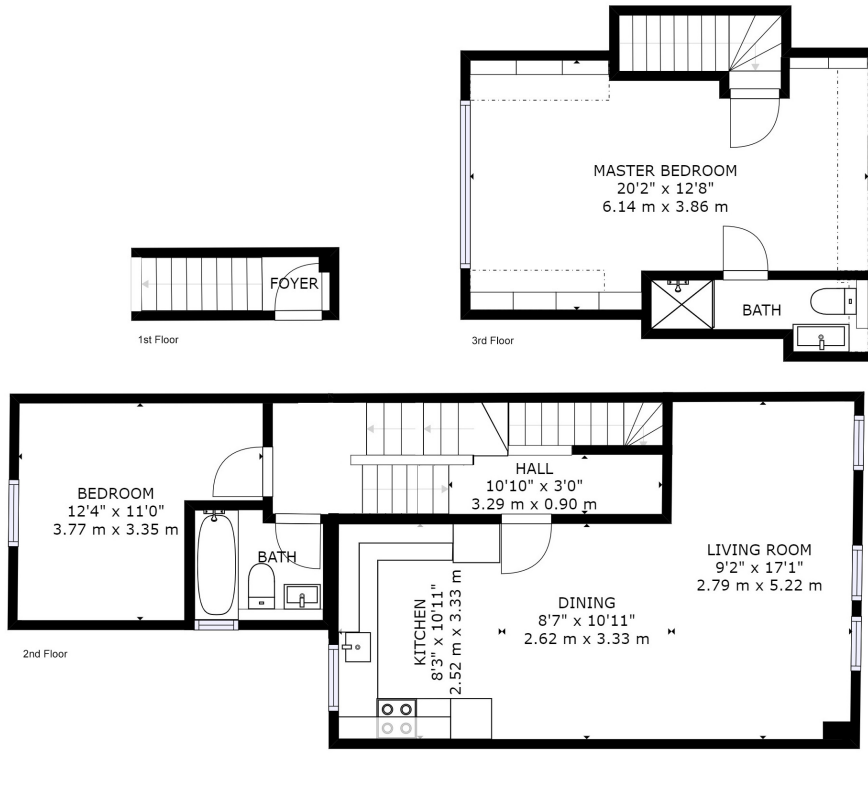
*NB The landlord of this property is related to a member of YRT Residential Limited. Please note that virtual furnishing is included on the images of this apartment.

Features

- Two Double Bedrooms
- Two Bathrooms
- Split Level Flat
- Recently Refurbished
- Open Plan Kitchen/Reception
- Close to Salusbury Road
- Available From Mid February 2024
- Quietly Located
- Offered Fully Furnished



Ashmore Road, Maida Vale, W9



Ashmore Road W9

EXCLUDED AREAS: , REDUCED HEADROOM BELOW 1.5M: 48 sq ft, 4 m²
TOTAL: 928 sq ft, 86 m²

Floor plans are for identification and guideline purposes only, not to scale.
Compliant with RICS code of measuring practice.