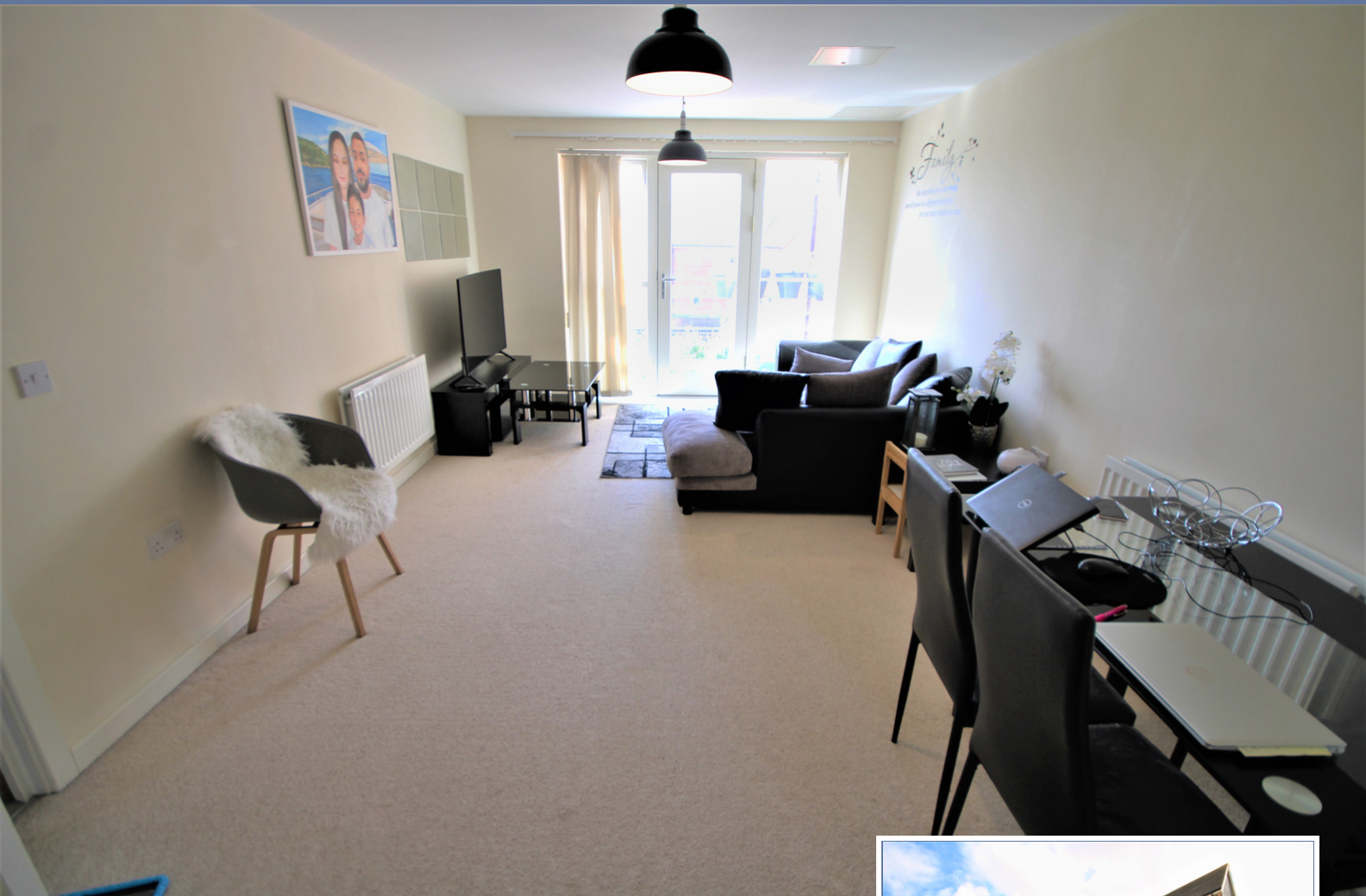


elevation

estate agents | est. 1992

9 Whittle Court,
Knowlhill, Milton Keynes, MK5 8FT

Tel: 01908 231 551
mail@elevationestateagents.com



**10 25, Coleman House, Watling Street,
Bletchley, Milton Keynes,
Buckinghamshire, MK2 2AW**

£160,000 Leasehold

- Two Bedroom Two Bathroom
- Parking for one vehicle
- Cash buyers only
- Best Bids in before 25th of september
- Large apartment
- Can rent for £1,100 a month
- EPC Rating





****CASH BUYERS ONLY , BEST AND FINAL BID'S CLOSE ON 25th OF SEPTEMBER****

This is an immaculately presented large two bedroom apartment located in the popular AQUA development within Fenny Stratford. The accommodation comprises entrance hall, bright and airy lounge/diner, fully integral kitchen, two double bedroom, modern bathroom and storage cupboards. Outside there is allocated parking for one vehicle. This apartment is ideal for first time buyers or investors as it is located within close proximity of great transport links such as the A5 and Bletchley train station and a wide range of local amenities. Please call the elevation team for more information and to arrange your viewing.

Service charge per month £136

Ground rent per year £296

Buildings insurance a year £415

125 years lease from 2007

Disclaimer

Whilst we have endeavoured to prepare our sales particulars accurately none of the services, appliances or equipment have been tested. A buyer should satisfy themselves on such matters prior to purchase. Any measurements or distances mentioned in these particulars are for guide reference only. If such particulars are fundamental to a purchase, buyers should rely on their own enquiries. All enquiries should be directed to Elevation Estate Agents in the first instance.