



Farriers Close, Baldock, Hertfordshire. SG7 5BQ







## 1 Bedroom Cluster House

**£189,995 Freehold**

Set in the centre of Baldock is this well presented one bedroom cluster home. The property is located in a quiet Cul-de-Sac and offers a modern kitchen and shower room. The property is set across two floors and is freehold and chain free.

- One bedroom
- Cluster home
- Freehold
- Double glazed
- Chain free
- Gas central heating
- Allocated parking space
- EPC rating D. Council tax band B

## **Ground Floor**

### **Entrance hall:**

Entrance via double glazed door to:

### **Lounge/Kitchen:**

Abt: 15' 8" x 13' 0" (4.78m x 3.96m) Two double glazed windows to the front, range of base and wall units with roll top work surfaces, stainless steel sink drainer, plumbing for washing machine, laminate flooring, stairs to:

### **First floor**

### **Landing:**

Doors to:

### **Bedroom:**

Double glazed window to the front, radiator, carpet as fitted.

### **Bathroom:**

Double glazed window to front, low level WC, hand wash basin, walk in shower.

### **Outside:**

### **Garden:**

Small open plan front garden, laid to lawn, pathway to front door.

### **Parking:**

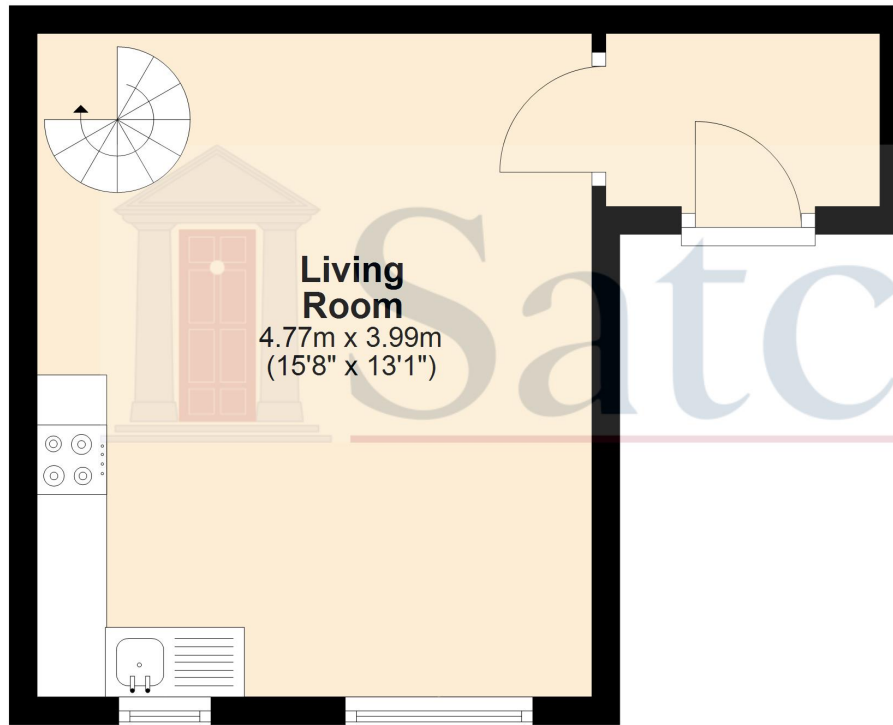
One parking space allocated at the rear of the property.



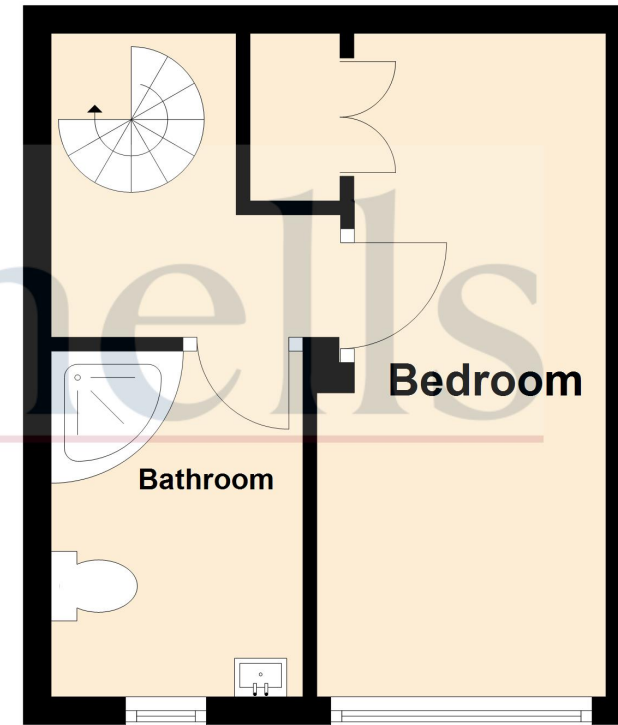
These particulars are a guide only and do not constitute an offer or a contract. The floor plan is for identification purposes only and not to scale. All measurements are approximate and should not be relied upon if ordering furniture, white goods and flooring etc. We have presented the property as we feel fairly describes it but before arranging a viewing or deciding to buy, should there be anything specific you would like to know about the property please enquire. Satchells have not tested any of the appliances or carried out any form of survey and advise you to carry out your own investigations on the state, condition, structure, services, title, tenure, and council tax band of the property. Some images may have been enhanced and the contents shown may not be included in the sale. Satchells routinely refer to 3rd party services for which we receive an income from their fee. If you would like us to refer you to one of these services please ask one of our staff who will pass your details on. We advise you check the availability of the property on the day of your viewing.



## Ground Floor



## First Floor



For illustrative purposes only - NOT TO SCALE - Measurements shown are approximate.  
The size and position of doors, windows, appliances and other features are approximate.

Plan produced using PlanUp.