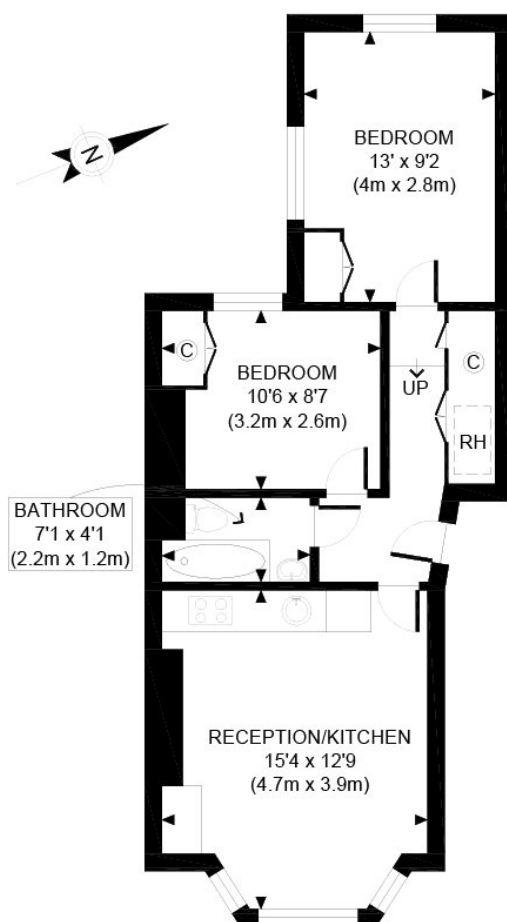




## Portnall ROad, London, W9

£2,300 pcm

- Two Bedroom Apartment
- High Ceilings
- Ground Floor
- Newly Refurbished
- Open Plan Kitchen / Living Room
- Furnished



RAISED GROUND FLOOR  
GROSS INTERNAL  
FLOOR AREA 530 SQ FT

APPROX. GROSS INTERNAL FLOOR AREA 530 SQ FT / 49 SQM

Ref:

Copyright **photoplan**

Disclaimer: Floor plan measurements are approximate and are for illustrative purposes only.  
While we do not doubt the floor plan accuracy and completeness, you or your advisors should  
conduct a careful, independent investigation of the property in respect of monetary valuation

