



Forest Court, Holden Avenue, Woodside Park, N12

£475,000



Forest Court, Holden Avenue, Woodside Park, N12

A modern and stylish two double bedroom duplex apartment located less than 400 ft from Woodside Park underground station (Northern Line). This brand newly refurbished apartment further benefits from a balcony, garage, access to communal gardens as well as an external storage unit.

Arranged over the third and fourth floor (with lift), this flat benefits from 678 Sq Ft (62 Sq M) of internal space including a contemporary open plan kitchen/reception room which offers direct access to a decked balcony, an elegant bathroom and ample storage.

We have been advised that the lease has circa 957 years remaining.

Forest Court is a well maintained block of apartments and is perfectly located with Woodside Park Underground station close by. Local amenities, restaurants and further transport links can also be found on North Finchley High Road which is positioned just 0.3 miles from the apartment.


Features

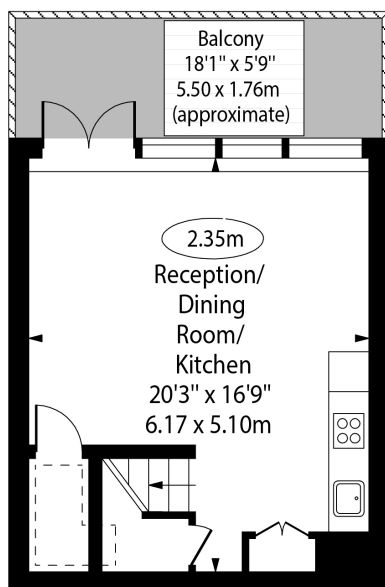
- Two Bedroom Duplex Apartment
- Brand Newly Refurbished
- Modern & Stylish
- Balcony
- Long Lease Remaining
- Less Than 400 Yards To Woodside Park Underground
- Open Plan Kitchen/Reception
- Access To Communal Gardens
- External Storeroom and Garage



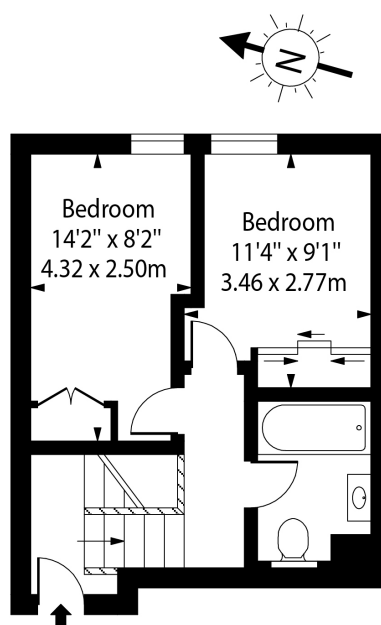
Forest Court, Holden
 Avenue, Woodside
 Park, N12

Forest Court,
 Holden Avenue, N12

 - Ceiling Height



Third Floor



Fourth Floor

Approx Gross Internal Area 683 Sq Ft - 63.45 Sq M

For Illustration Purposes Only - Not To Scale Floor Plan by www.nogaphotostudio.com Ref: No.46252

This floor plan should be used as a general outline for guidance only. Any intending purchaser or lessee should satisfy themselves by inspection, searches, enquiries and full survey as to the correctness of each statement. Any areas, measurements or distances quoted are approximate and should not be used to value a property or be the basis of any sale or let.