



Day & Co
ESTATE AGENTS

28 Cavendish Street

Keighley

BD21 3RG



19 Catherine Street, Keighley,
West Yorkshire, BD21 1EF

£69,995

T: 01535 664609

W: www.dayandcoestateagents.co.uk

E: keighley@dayandcoestateagents.co.uk

- THROUGH TERRACE
- GAS CENTRAL HEATING & DOUBLE GLAZING
- EPC RATING D

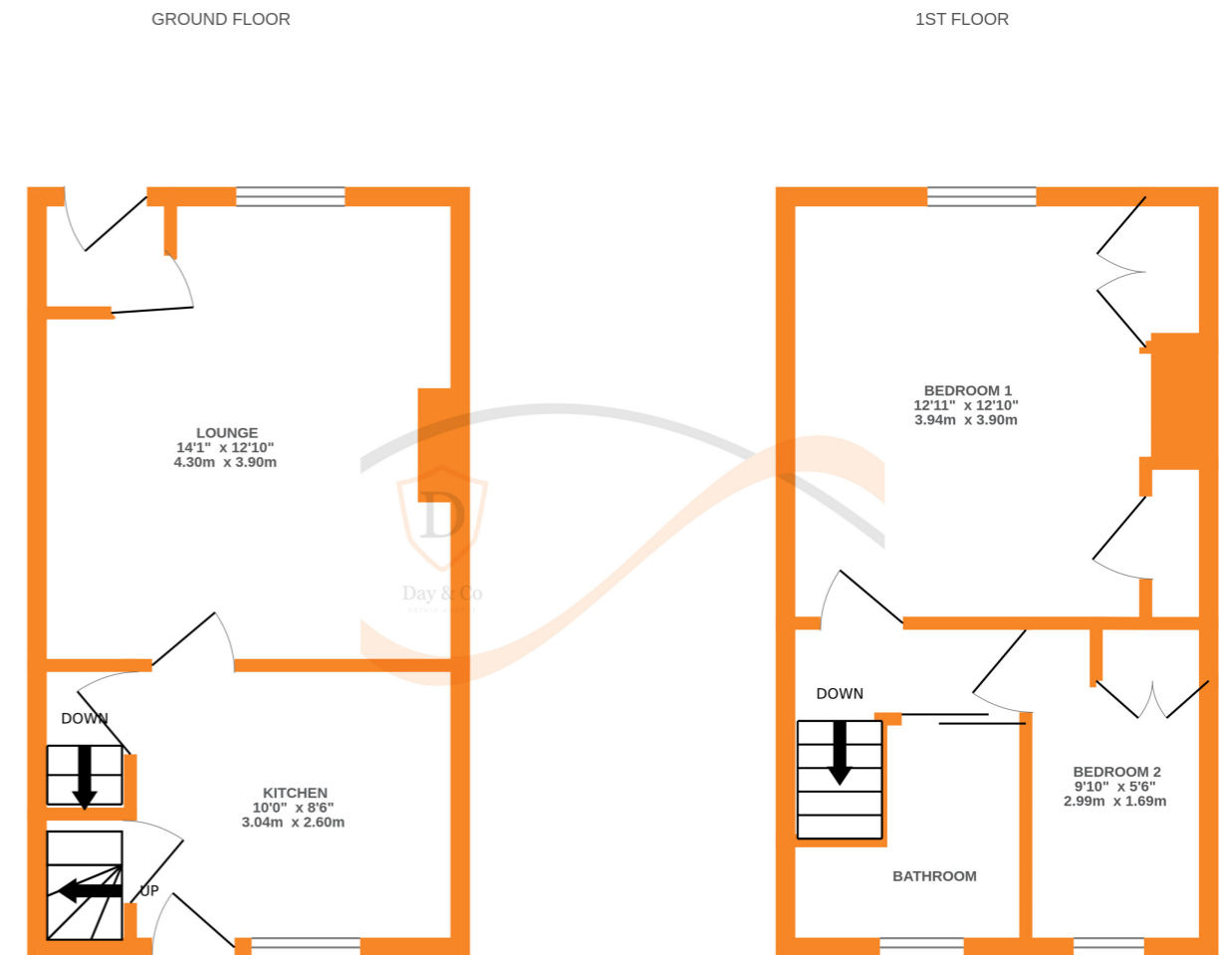
- TWO BEDROOMS
- NO ONWARD CHAIN

SUMMARY

** THROUGH TERRACE HOUSE, TWO BEDROOMS, GAS CENTRAL HEATING, DOUBLE GLAZING, NO ONWARD CHAIN, EPC RATING D **

FULL DESCRIPTION

Offered for sale is this two bedroom through terrace house situated in this convenient location for access to the town centre off South Street. In brief the accommodation comprises of a Lounge with window to the front elevation and entrance door, Kitchen which has a range of basic units, sink, door and window to the rear, cellar. First floor - Two Bedrooms, Bathroom. Gas Central Heating & Double Glazing. Outside front garden, open plan yard area to the rear with right of access over. No onward chain. EPC Rating D.



Whilst every attempt has been made to ensure the accuracy of the floorplan contained here, measurements of doors, windows, rooms and any other items are approximate and no responsibility is taken for any error, omission or mis-statement. This plan is for illustrative purposes only and should be used as such by any prospective purchaser. The services, systems and appliances shown have not been tested and no guarantee as to their operability or efficiency can be given.
Made with Metropix ©2024