

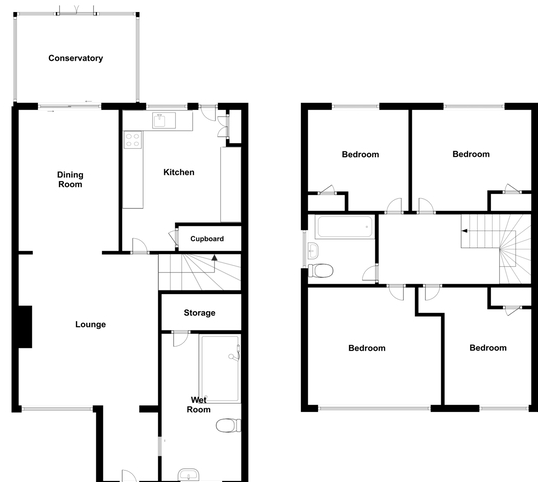


- Four bedroom house
- Semi detached
- Popular village location
- Three reception rooms
- Kitchen & Breakfast room
- Four double bedrooms
- No onward chain
- New windows & Boiler

6 Vaughan Close, Rayne, Braintree, Essex. CM77 6TW.

** Coming to the market in the next few weeks **

Occupying a quiet Cul-De-Sac position in the frequently requested village of Rayne, is this well established four bedroom semi detached house, offered for sale with no onward chain. The property has been sympathetically reconfigured and extended over the years, to create an extremely versatile family home, which now offers an array of spacious living accommodation, along with a light and airy feel throughout. On the ground floor some highlights include; entrance hall, spacious living room, separate dining area, conservatory, kitchen & breakfast room and a large wet room (which was previously used as an additional reception room). The first floor accommodation consists of four well appointed double bedrooms and a recently refitted family bathroom suite. Outside, the property is further enhanced by having an attractive and well maintained rear garden, and also a driveway to the front of the house which provides off road parking for two vehicles. New to the



Property Details.

