



35, Penton Court, Jamnagar Close, Staines-upon-Thames, Surrey. TW18 2JU.
2 Bedroom Apartment - £300,000 Share of Freehold

35, Penton Court, Jamnagar Close, Staines-upon-Thames, Surrey. TW18 2JU.

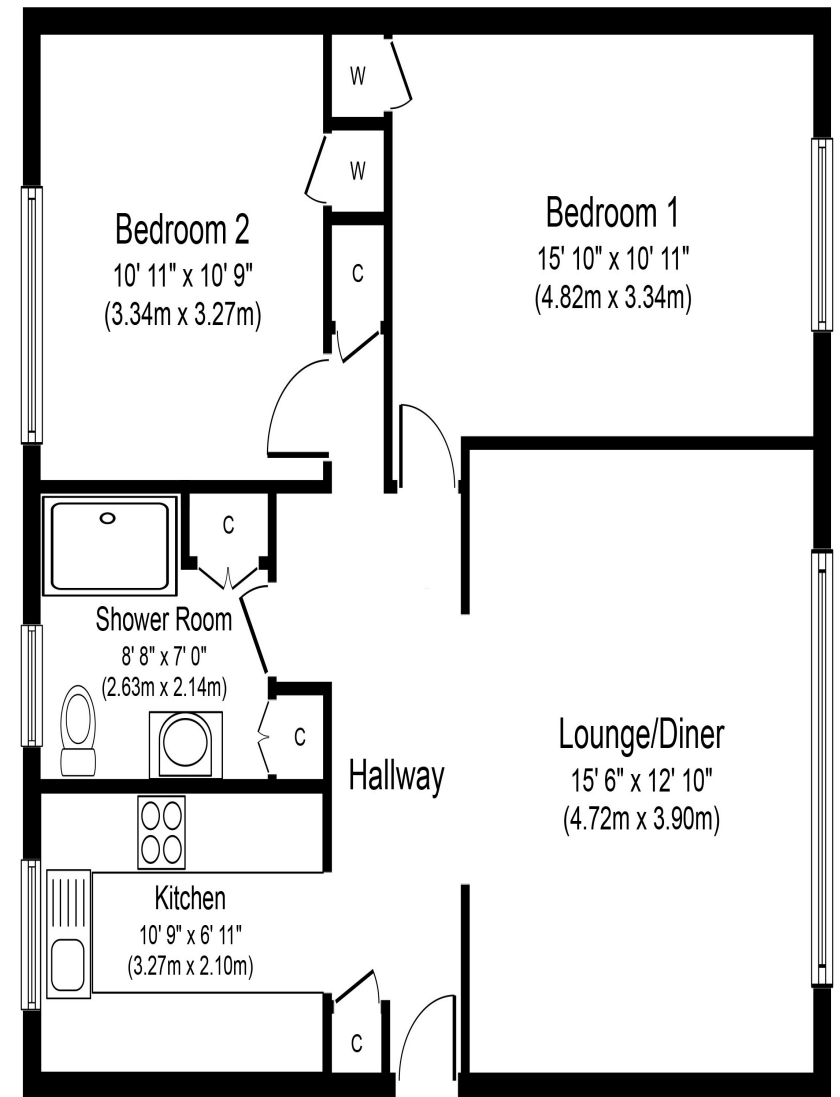
01784 451458

2 Bedroom Apartment - £300,000 Share of Freehold

SHARE OF FREEHOLD | WELL PRESENTED & SPACIOUS TWO BEDROOM APARTMENT IN THIS SOUGHT AFTER RIVERSIDE DEVELOPMENT IDEALLY LOCATED FOR STAINES TOWN CENTRE, MAINLINE TRAIN STATION & THE RIVER THAMES. The property benefits from a spacious lounge/diner, separate fitted kitchen, two double bedrooms, white bathroom suite, well-maintained Riverside ground with direct tow path access and garage. No Onward Chain. Viewings Highly Recommended!

Key Features

SHARE OF FREEHOLD
RIVERSIDE DEVELOPMENT
DIRECT TOW PATH ACCESS
CLOSE TO TOWN CENTRE & MAINLINE TRAIN STATION
WELL MAINTAINED RIVERSIDE GARDENS
GARAGE
NO ONWARD CHAIN
SPACIOUS ROOMS



Approximate Floor Area
734 sq. ft.
(68.1 sq. m.)

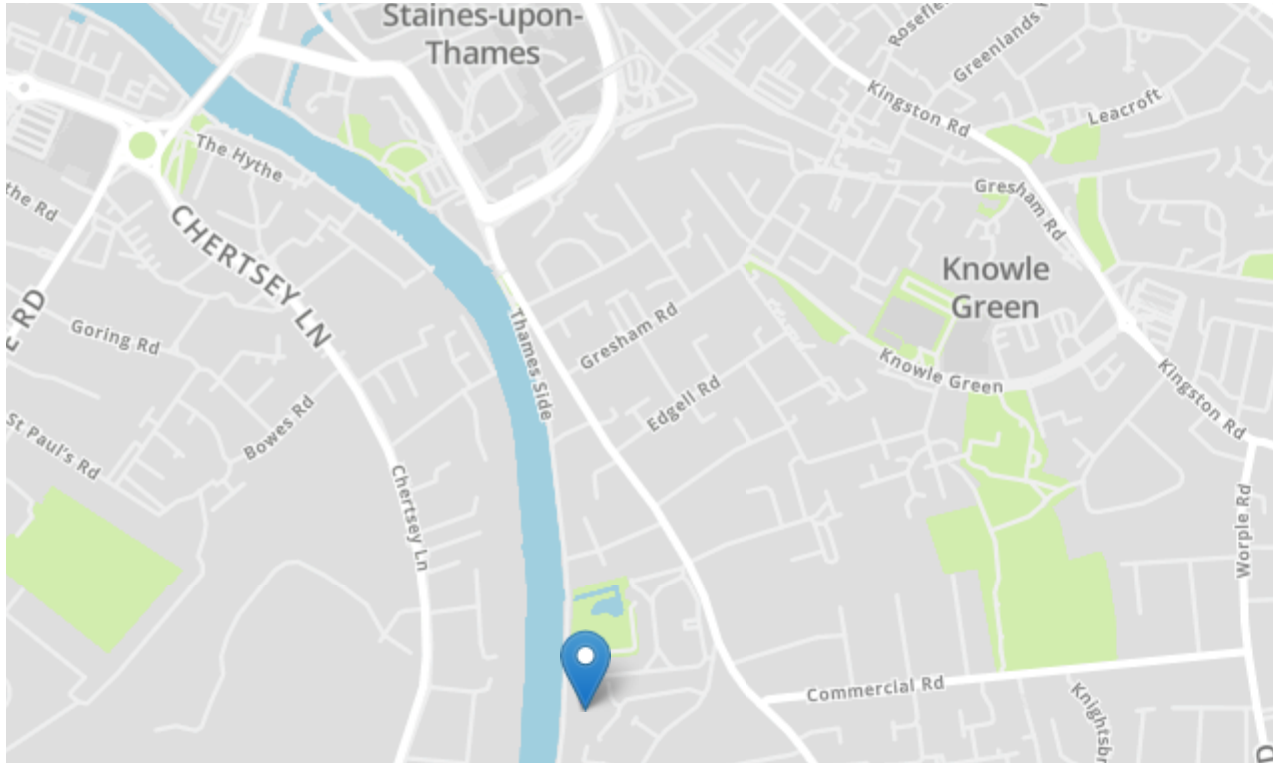


GREGORY BROWN
RESIDENTIAL SALES & LETTINGS



35, Penton Court, Jamnagar Close, Staines-upon-Thames, Surrey. TW18 2JU.

gregory-brown.co.uk



Tenure	Share of Freehold
Lease Term	900years +
Ground Rent	£0
Service Charge	£146.50pcm (2024)
Local Authority	
Council Tax	

We have prepared these property particulars as a general guide to a broad description of the property. They are not intended to constitute part of an offer or contract. We have not carried out a structural survey and the services, appliances and specific fittings have not been tested. All photographs, measurements, floorplans and distances referred to are given as a guide only and should not be relied upon for the purchase of carpets or any other fixtures or fittings. Lease details, service charges and ground rents (where applicable) and council tax are given as a guide only and should be checked and confirmed by your solicitor prior to exchange of contracts. The copyright of all details, photographs and floorplans remain exclusive to Gregory Brown.

