



**3 Willow Court
Wragby
Lincoln
Lincolnshire
LN8 5RE**

Offers in Excess of £208,000

bettermove

Willow Court Lincoln

Bettermove are proud to present this 4 bedroom end of Terrace house in Wragby available with no forward chain.

The property benefits from double glazing, gas central heating throughout and has off street parking available via an allocated parking space. The council tax band is B.

The property is tenanted and rental yields can be obtained through Bettermove.

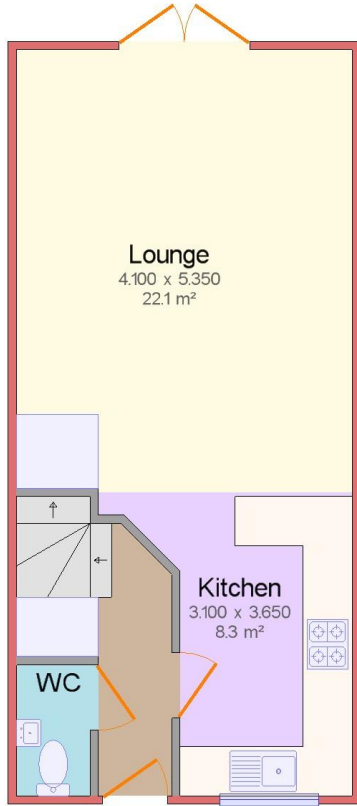
The interior of this well presented property comprises a spacious living room, downstairs WC and fitted kitchen on the ground floor. The first floor consists of 2 bedrooms and the family bathroom including the master bedroom with an ensuite bathroom. The second floor has two further bedrooms and another family bathroom. The exterior boasts a private rear garden, perfect for enjoying the summer months.

Located in the popular town of Wragby, the property is close to a range of amenities, including shops, supermarkets, restaurants and pubs. Excellent transport connections can be found from the A158 and many local buses.

This exciting opportunity should not be missed! All enquiries can be made through Bettermove on 0330 004 0050.

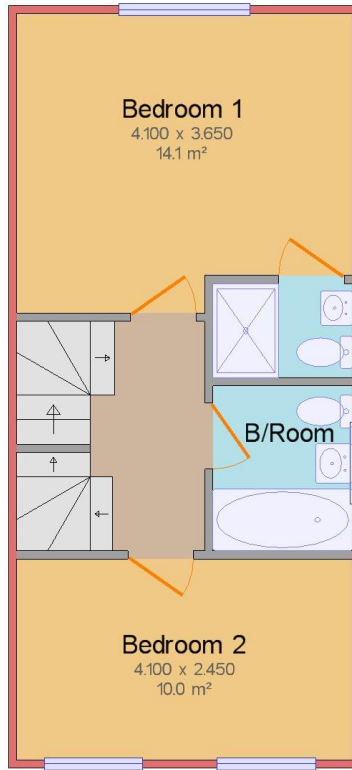


Ground Floor
Gross internal area: 37.7 m² (405.8 ft²)

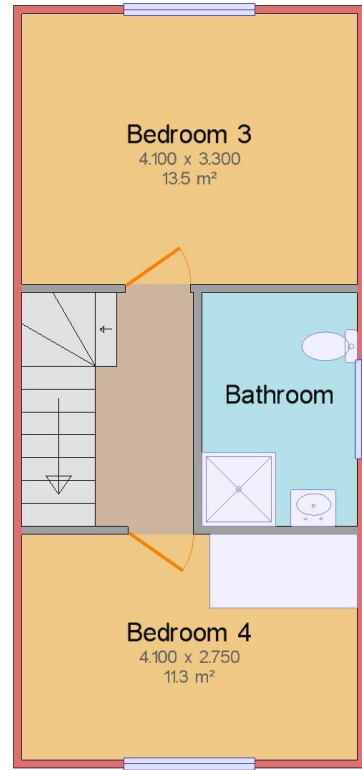


Drawings are for illustrative purposes only.
Produced using Quick Sketch 3.17.2w

First Floor
Gross internal area: 37.3 m² (401.6 ft²)



Second Floor
Gross internal area: 37.4 m² (402.5 ft²)



Drawings are for illustrative purposes only.
Produced using Quick Sketch 3.17.2w

20-22 Bridge End, Leeds, LS1 4DJ
t: 0330 004 0050 e: hello@bettermove.co.uk
www.bettermove.co.uk