

Little London

Heytesbury, BA12 0ES

COOPER
AND
TANNER



£450,000 Freehold

An outstanding extended three bedroom period cottage that is located in the desirable village of Heytesbury. The home has been tastefully decorated and has deceptively spacious accommodation along with high end fixtures and fittings. The property is complimented with a generous garden that incorporates a decking seating sun area along with an outbuilding with power and burner stove. Viewing highly advised.

Little London Heytesbury BA12 0ES

 3  2  2 EPC E

£450,000 Freehold

DESCRIPTION

This superb extended end terrace cottage is presented in outstanding condition and complemented with high end fixtures and fittings.. Internally are a host of features including brick fireplaces, wood burning stoves, natural flooring and a tasteful decorative colour combination. Entrance hall with access to the spacious fitted kitchen breakfast room with a range of coloured units, integrated appliances, central island with seating bar, dining room area with glazed roof and doors to the outside seating area with glazed roof, Utility room , lounge with brick fireplace and stove. First floor landing gives access to the three bedrooms and master en-suite, wood flooring and beams,. The family bathroom has a white suite and window.

OUTSIDE

Outside you will find a generous lawned garden that incorporates a decking area for seating and a glazed covered dining area. At the top of the garden is a decorated outbuilding with power and a feature stove. We strongly urge the importance of an immediate viewing

LOCATION

The property is well located in the heart of this sought-after Wylde Valley village. The community today is based around the Church of St Peter and St Paul, with its origins in the 12th century, the thriving post office/shop, and a pub, The Red Lion. There are plentiful shops in Warminster that is only three miles away. A broader range of facilities to be found at Wiltshire's county town, Trowbridge, and the enchanting Cathedral City of Salisbury and shopping hotspot of Bath are both within easy reach. Heytesbury also offers great sporting facilities with a football club in the village and joint cricket club with the nearby Sutton Veny.

TAX BAND

C





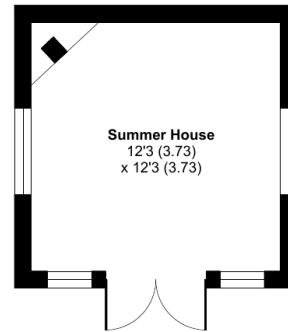
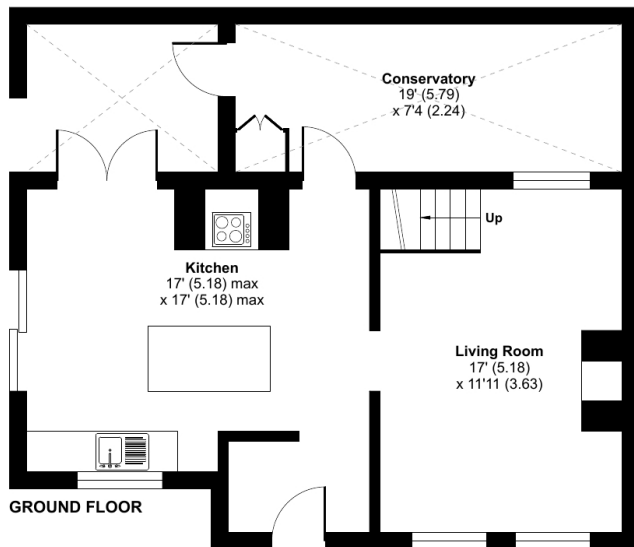
Little London, Heytesbury, Warminster, BA12

Approximate Area = 1100 sq ft / 102.1 sq m

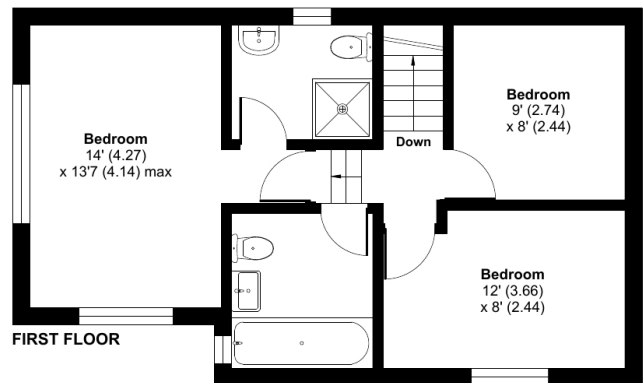
Outbuilding = 152 sq ft / 14.1 sq m

Total = 1252 sq ft / 116.2 sq m

For identification only - Not to scale



OUTBUILDING



Floor plan produced in accordance with RICS Property Measurement Standards incorporating International Property Measurement Standards (IPMS2 Residential). © nichecom 2024. Produced for Cooper and Tanner. REF: 1129556

WARMINSTER OFFICE

Telephone 01985 215579

48-50, Market Place, Warminster, Wiltshire BA12 9AN

warminster@cooperandtanner.co.uk

**COOPER
AND
TANNER**

Important Notice: These particulars are set out as a general outline only for the guidance of intended purchasers and do not constitute, nor constitute part of, an offer or contract. All descriptions, dimensions, reference to condition and necessary permissions for use and occupation, warranties and other details are given without responsibility and any intending purchasers should not rely on the m as statements or representations of fact but must satisfy themselves by inspection or otherwise as to the correctness of each of them.

