



Flat 12 St James House, James Walk, Bexhill-on-Sea, East Sussex, TN40 2JZ

**£170,000**



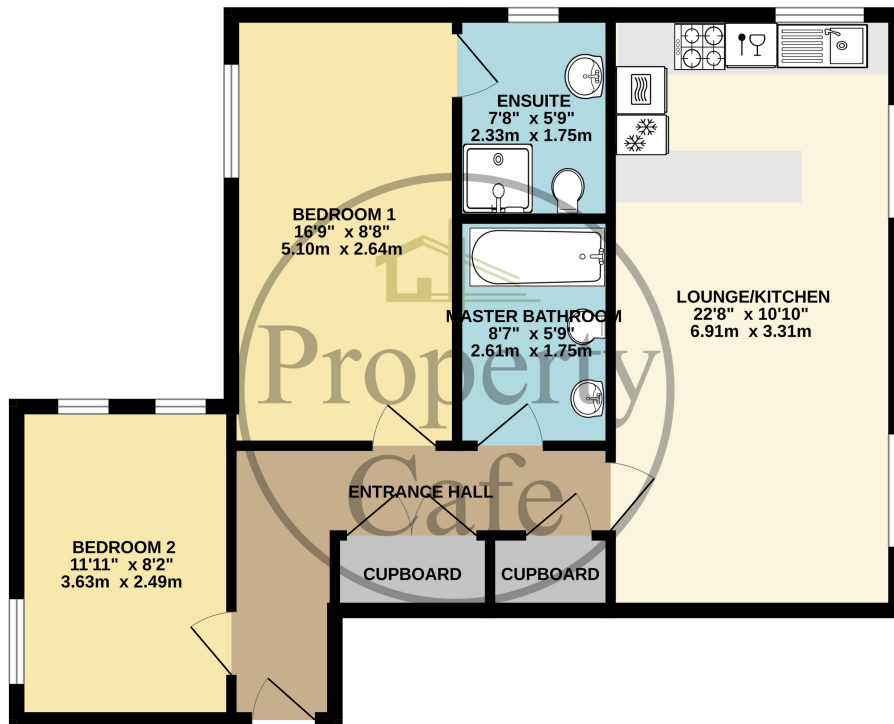
- 2nd Floor Apartment For Sale
- Open Plan Lounge/Kitchen
- Two Double Bedrooms
- Two Modern Fitted Bathrooms
- Off-Road Parking
- Immaculately Presented Communal Gardens
- Over 55's Only
- Sought After Location
- Long Lease
- Sold With No Onward Chain
- Viewing Highly Recommended







**2ND FLOOR FLAT**  
**687 sq.ft. (63.8 sq.m.) approx.**



TOTAL FLOOR AREA : 687 sq.ft. (63.8 sq.m.) approx.  
 Whilst every attempt has been made to ensure the accuracy of the floorplan contained here, measurements of doors, windows, rooms and any other items are approximate and no responsibility is taken for any error, omission or mis-statement. This plan is for illustrative purposes only and should be used as such by any prospective purchaser. The services, systems and appliances shown have not been tested and no guarantee as to their operability or efficiency can be given.  
 Made with Metroplex 5/2024