



**Tewkesbury**

**01684 293246**

**Engall**  
**Castle**  
**.com**



## 5 Tannery Court, St Marys Lane, Tewkesbury, GL20 5UN

Simply stunning, is the only description one can apply to the view from the kitchen and open plan living space of this luxury, contemporary designed first floor apartment.

Finished to a high standard with an exacting specification throughout these really are special,

Designed with modern living in mind, with open living accommodation creating a sociable, light and friendly environment to relax or entertain. The fully integrated stylish kitchen area has a fitted dishwasher, wine cooler, electric hob; double electric ovens; extractor; fridge and freezer. The central island provides the perfect space to stand and stare at the far reaching views, glass of wine in hand, whilst the sauce thickens! Kickboard lighting, wall lights and downlights are fitted to enhance the mood and the wall to ceiling windows frame the perfect “living” picture.

There are two double bedrooms; a contemporary styled shower room with large walk in shower with rainfall shower head and separate hand held attachment, vanity sink unit, low level wc; bathroom mirror with integrated light and tiled floor.

There is a plumbing for a discreetly located washing machine and tumble dryer and separate airing cupboard.

Located within easy reach of the town centre, in sight of the Abbey and yet quietly positioned on the banks of the River Avon overlooking the Ham towards the Malverns, this apartment really does have the best of both worlds.

Tewkesbury is a popular Tudor town with a wealth of leisure, health, education and shopping facilities including hospital, theatre, swimming pool and sports centre.

Centrally situated between Cheltenham, Worcester and Gloucester it is an excellent commuter base, with Birmingham and other major cities easily accessible via the close motorway and rail networks.



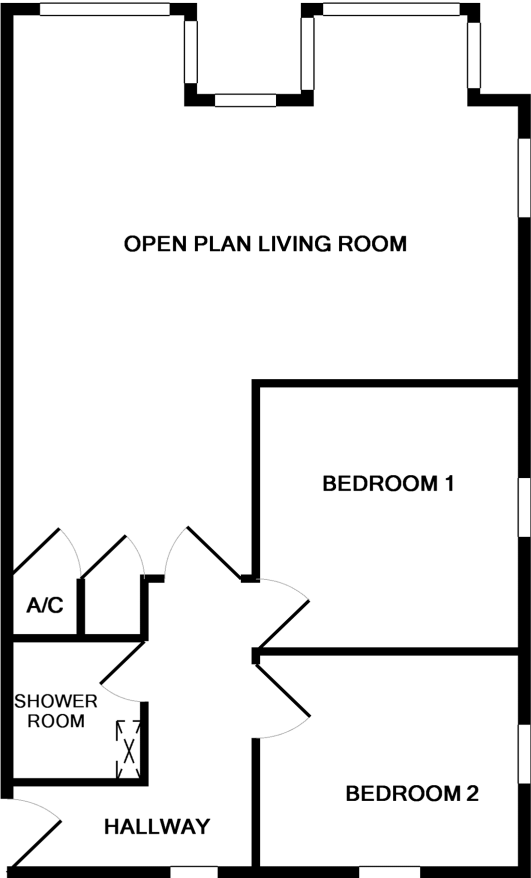
# First Floor

**Open Plan Living Room** 20' 7" x 18' (6.27m x 5.49m)  
MAX

**Bedroom 1** 10' 7" x 10' 2" (3.23m x 3.10m)

**Bedroom 2** 10' 2" x 8' 10" (3.10m x 2.69m)

**Shower Room** 7' x 5' (2.13m x 1.52m)



**£200,000**

155 High Street Tewksbury Gloucestershire GL20 5JP  
Office opening hours: Monday - Friday 9am to 6pm, Saturday 9am to 4pm  
email: [sales@engallcastle.com](mailto:sales@engallcastle.com)

Whilst every attempt has been made to ensure the accuracy of the floor plan contained here, measurements of doors, windows, rooms and any other items are approximate and no responsibility is taken for any error, omission, or mis-statement. This plan is for illustrative purposes only and should be used as such by any prospective purchaser. The services, systems and appliances shown have not been tested and no guarantee as to their operability or efficiency can be given  
Made with Metropix ©2017

01684 293 246



rightmove

the UK's number one property site



[www.engallcastle.com](http://www.engallcastle.com)







## Agents Note

These property details are set out as a general outline only and do not constitute any part of an Offer or Contract. Any services equipment, fittings or central heating systems have not been tested and no warranty is given or implied by Engall Castle Ltd that these are in working order. Buyers are advised to obtain verification from their solicitor or surveyor. Fixtures and fittings or other items are not included unless specifically described. All measurements, distances and areas are approximate and for guidance only and should not be relied upon for the purposes of fitting carpets or furniture etc. These property details and all statements within this document are provided without responsibility on behalf of Engall Castle Ltd or its employees or representatives and should not be relied on as statements of fact. Prospective purchasers must satisfy themselves as to the accuracy of all details pertaining to the property.

