

Cherry Blossom Way

Yeovil, BA22 7FW

COOPER
AND
TANNER



£475,000 Freehold

Introducing a stunning, newly constructed three-bedroom detached bungalow, crafted with precision and care by Lovells

Cherry Blossom Way Yeovil

BA22 7FW

 3  2  2 EPC B

£475,000 Freehold

DESCRIPTION

Introducing a stunning, newly constructed three-bedroom detached bungalow, crafted with precision and care by Lovells in 2022. This immaculate property is a true testament to modern living, boasting a range of desirable features that make it the perfect place to call home.

As you approach the property, you'll be greeted by a spacious driveway and a garage, providing ample parking and storage space. This thoughtful design ensures convenience and practicality right from the moment you arrive. The bungalow's exterior is a testament to Lovells' commitment to quality craftsmanship and contemporary aesthetics. With a sleek and stylish appearance, it blends seamlessly into its surroundings, offering a clean and modern appeal that sets the tone for what's to come.

Step inside, and you'll be immediately struck by the contemporary interior design that defines this home. Every detail has been meticulously considered, from the choice of fixtures and finishes to the open and airy layout that maximizes the use of space. The neutral colour palette throughout creates a soothing and timeless backdrop, allowing you to personalize the space to your own taste.

The heart of this bungalow is the spacious living area, where you can relax and entertain in style. The open-plan design seamlessly connects the living room to the kitchen and dining area, providing a welcoming and sociable atmosphere that's perfect for family gatherings or hosting guests. The kitchen itself is a masterpiece of modern functionality, boasting top-of-the-line appliances, ample storage, and a central island for culinary adventures.

The master bedroom is a true retreat, complete with an en-suite bathroom that exudes luxury and comfort. The remaining two bedrooms are equally well-appointed, providing space for family

members, guests, or the flexibility to create a home office or hobby room as desired.

One of the standout features of this bungalow is the rear garden, which includes a patio area. It's a great outdoor space where you can unwind, dine al fresco, or simply enjoy the fresh air and sunshine. This property also embraces energy efficiency with its air source heat pump central heating system. You'll enjoy the benefits of sustainable living while keeping your home cosy and warm throughout the year.

Overall, this newly constructed home is a testament to modern comfort and style. From the contemporary interior design to the en-suite master bedroom, garage, and air source heat pump central heating, every aspect of this home is designed with your well-being and convenience in mind. If you're searching for a property that seamlessly combines luxury, sustainability, and functionality, look no further. Contact us today to arrange a viewing and experience the charm and elegance of this outstanding home for yourself.

TENURE

Freehold

COUNCIL TAX BAND

D





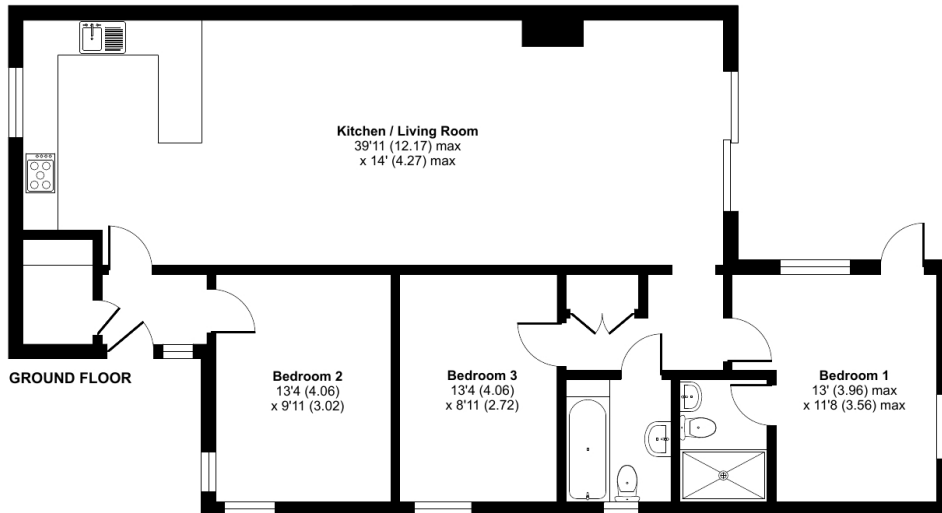
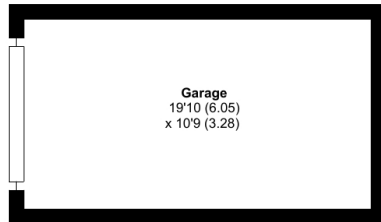
Cherry Blossom Way, Sparkford, Yeovil, BA22

Approximate Area = 1159 sq ft / 107.7 sq m

Garage = 215 sq ft / 19.9 sq m

Total = 1374 sq ft / 127.6 sq m

For identification only - Not to scale



Floor plan produced in accordance with RICS Property Measurement Standards incorporating International Property Measurement Standards (IPMS2 Residential). © nitchecom 2023. Produced for Cooper and Tanner. REF: 1053496

CASTLE CARY OFFICE

Telephone 01963 350327

Fore Street, Castle Cary, Somerset BA7 7BG

castlecary@cooperandtanner.co.uk

**COOPER
AND
TANNER**

Important Notice: These particulars are set out as a general outline only for the guidance of intended purchasers and do not constitute, nor constitute part of, an offer or contract. All descriptions, dimensions, reference to condition and necessary permissions for use and occupation, warranties and other details are given without responsibility and any intending purchasers should not rely on the m as statements or rep representations of fact but must satisfy themselves by inspection or otherwise as to the correctness of each of them.

