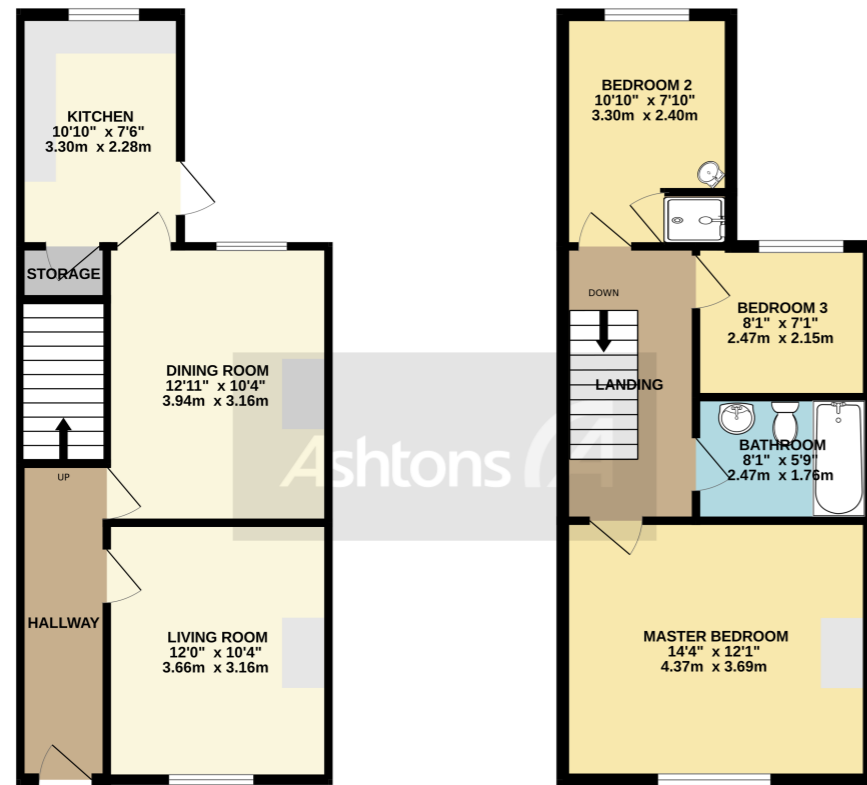


GROUND FLOOR  
440 sq.ft. (40.9 sq.m.) approx.

1ST FLOOR  
440 sq.ft. (40.9 sq.m.) approx.



Ashtons

EASTFORD ROAD WA4 6EY

TOTAL FLOOR AREA: 880 sq.ft. (81.8 sq.m.) approx.  
While every attempt has been made to ensure the accuracy of the floorplan contained here, measurements of doors, windows, rooms and any other items are approximate and no responsibility is taken for any error, omission or mis-statement. This plan is for illustrative purposes only and should be used as such by any prospective purchaser. The services, systems and appliances shown have not been tested and no guarantee as to their operability or efficiency can be given.  
Made with Meepix ©2023



25 Eastford Road, Warrington, Cheshire. WA4 6EY.

£199,950

NO ONWARD CHAIN | THREE BEDROOMS | CLOSE PROXIMITY TO STOCKTON HEATH | MID-TERRACED HOME | PERFECT FOR FIRST TIME BUYERS | COUNCIL TAX BAND A |



Contact your local office to arrange a viewing:

- Padgate: 01925 479334
- Great Sankey: 01925 454300
- Winwick: 01925 232146
- Stockton Heath: 01925 453400
- St.Helens: 01744 754120
- Wigan: 01942 498862
- Culcheth: 01925 764744
- Ashton-In-Makerfield: 01942 364446
- Newton-Le-Willows: 01925 907770
- Commercial Office: 01925 907709
- Lettings Head Office: 01925 873533
- Financial Services: 01925 221234

Viewing Arrangements

Viewing is strictly by appointment only through Ashtons Estate Agency.

Disclaimer Property Details

These particulars, whilst being believed to be accurate are set out as a general outline only for guidance and do not constitute any part of an offer or contract. Intending purchasers should not rely on them as statements of representation of fact, but must satisfy themselves by inspection or otherwise as to their accuracy. We have not carried out a detailed survey nor tested the services, appliances and specific furnishings. The measurements given are approximate. No person in this firm's employment has the authority to make or give any representation or warranty in respect of the property.

All details, photographs and floorplans are the copyright of Ashtons Estate Agency.



How much you can borrow? Speak to a mortgage expert in your local office.

Ashtons Financial Services



Ashtons.net rightmove

PrimeLocation.com Zoopla.co.uk



Welcome to this three-bedroom mid-terrace property, perfectly situated within the sought-after neighborhood of Walton and conveniently within walking distance to the vibrant Stockton Heath village. With no onward chain, this inviting home presents an excellent opportunity for first-time buyers and young families seeking comfort, convenience, and a wonderful community atmosphere. As you step inside, you are greeted by an inviting entrance hall, offering easy access to all areas of the house. The front living room exudes warmth and character, with an exposed chimney breast providing a cozy ambiance for relaxing evenings with loved ones. Moving towards the rear, you will find a charming dining room boasting ample natural light through its window and conveniently adjacent, the well-appointed kitchen offers ample storage space, including storage under the stairs.

**Did you know?**  
Ashtons Estate Agency now have a network of Independent, whole of Market Mortgage Advisors working in our offices.  
Speak to an expert today, contact your local office.



harmonious home in a desirable location. Early viewing is highly recommended to avoid disappointment. Contact us now to view.