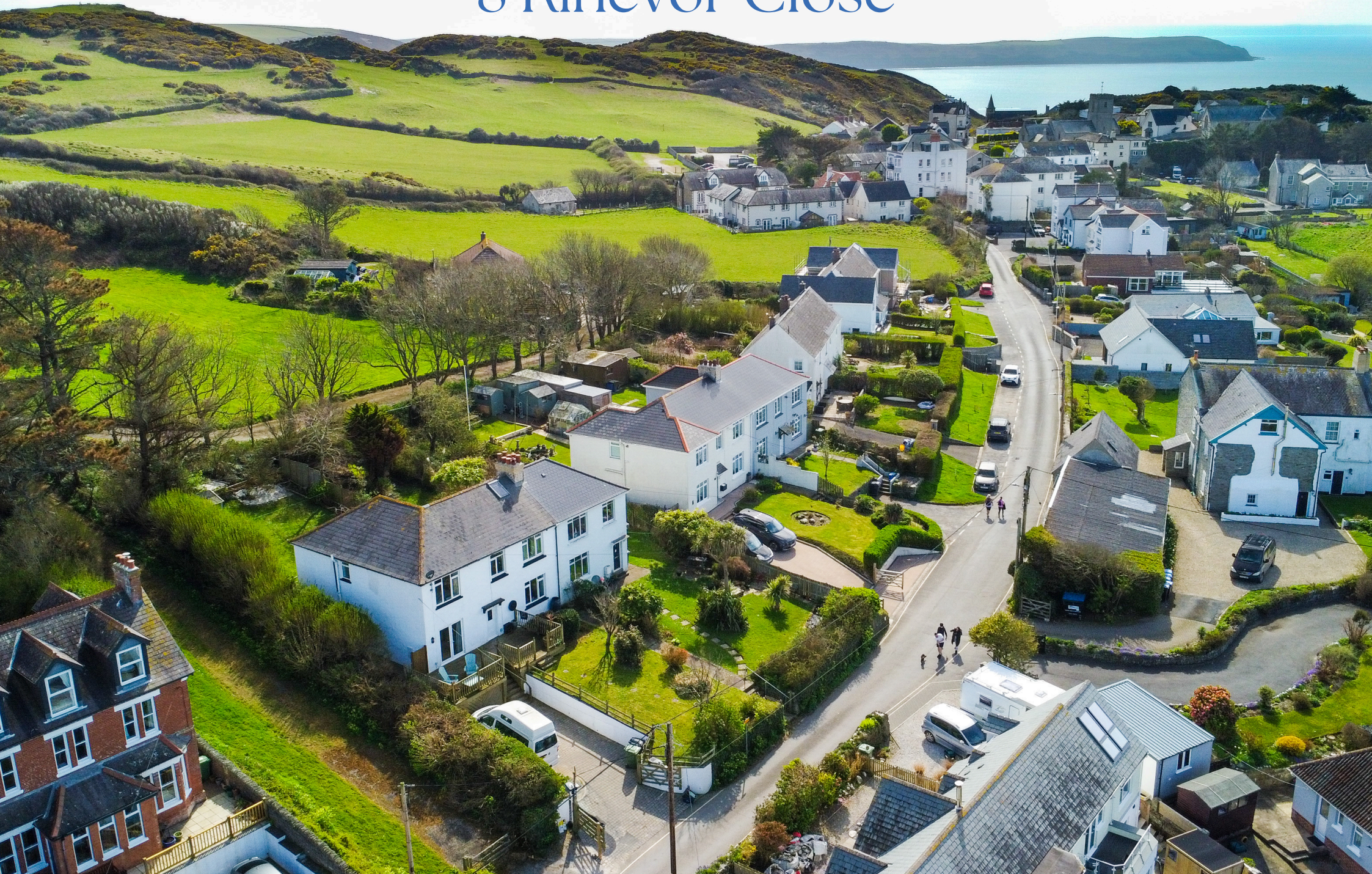


8 Kinevor Close





Tucked into the hillside above the much-loved village of Morteohoe, this 1950s semi has had a glow-up in all the right ways. Five bedrooms. Three shower rooms. Two reception rooms. A utility space (yes, a real one). You've got decked terraces front and back, a lawn for kids, dogs, and parking for four. And yes—those sea views are exactly as good as they look. It's set up for cocktails at sunset and cosy family garden parties.

The Location: Morteohoe, North Devon

You're not just buying a house here—you're stepping into a lifestyle. Morteohoe's laid-back charm mixes old-school Devon village life with the surfy vibes of neighbouring Woolacombe. You've got coast path hikes on the doorstep, Grunta beach a flip-flop stroll away, and access to the epic surf and sand of Woolacombe Bay in minutes.

Plus, this stretch of North Devon has gone global—literally. As part of the World Surfing Reserve, this coastline's prestige is climbing faster than your phone's altimeter on a coastal ramble.

The Space: Designed to Work With You

The heart of the home is the big open kitchen/breakfast room with Belfast sink, space for the American style fridge, a 7-ring gas range, and room for everyone to gather—kids, friends, dogs and all. It spills out to a private patio, perfect for BBQs, after-beach beers or simply letting the kids roam.

The front sitting room's got the views, the fire, and the character, while the snug adds cosy movie-night potential or a quiet space to read/work/pretend you're working.

Upstairs, you've got four solid doubles plus a single room (ideal for an office, or stashing guests when you can't get rid of them). And the shower rooms? No one's queueing here—there are three, including a family bathroom with roll-top bath.

More Potential to Play With

That loft space is crying out for conversion (subject to the usual approvals)—and would make a superb luxe Master Suite, studio or home office with sea views, it's all up to you.

In a nutshell:

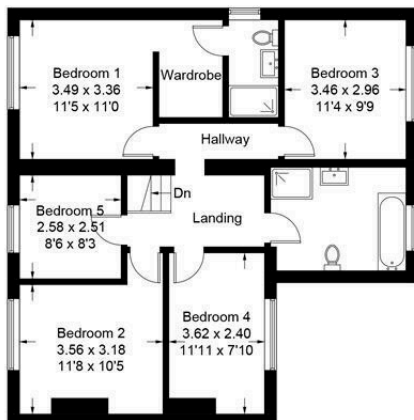
- 5 bedrooms including en-suite with dressing area
- 3 shower rooms with no fighting over the shower
- Multiple reception spaces including a snug
- Decks, garden and sea views
- Loft ready to be something special
- Ample parking and a walkable village vibe
- Morteohoe & Woolacombe beach /coastal lifestyle on your doorstep

If you're looking for the kind of home where the location's unbeatable, the lifestyle's dialled up to 11, and the potential still has room to grow—this is it.

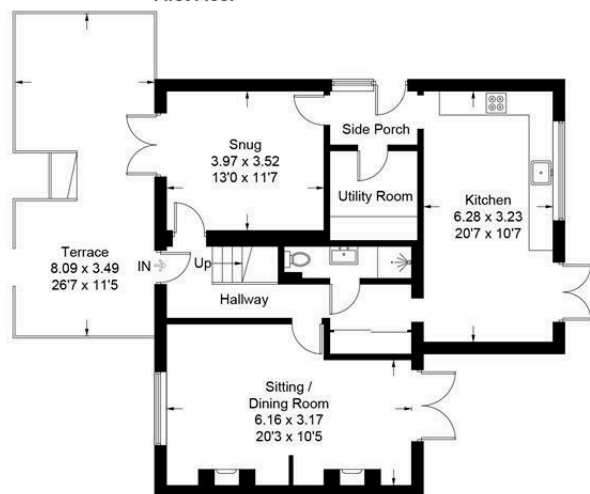




Finer Details



First Floor



Ground Floor

- 5 bedroom semi - detached coastal house
- 2 reception rooms, 3 shower rooms
- Open Plan Kitchen Dining Room
- Front and rear gardens and patios
- Gated driveway parking for several vehicles
- Sea and coastal views
- Council Tax Band - C
- Located in a small village community
- Mains Electric, water, gas and drainage
- Gas Central Heating
- Gigabit broadband is available
- Mobile signal is: Limited - Wifi calling or VOIP best for voice calls
- Flood risk: Very Low

Score	Energy rating	Current	Potential
92+	A		
81-91	B		
69-80	C		
55-68	D	63 D	78 C
39-54	E		
21-38	F		
1-20	G		

Watch the video



Contact Nic Chbat
01271 410108
nic@matchproperty.co.uk

