

5 Rivers Reach,

Frome, BA11 1AQ

COOPER
AND
TANNER



£285,000 Freehold

A unique opportunity to purchase a three-bedroom, end of terrace home in a highly sought after area of Frome, close to local amenities and a short walk to Frome town centre. Available with no onward chain.

5 Rivers Reach, Frome, BA11 1AQ

 3  2  1 EPC C

£285,000 Freehold

DESCRIPTION

An attractive modern house in a popular location just five minutes' walk of the town centre.

As you enter the home you are greeted by a very useful hallway, from here you have access to a downstairs WC, and access into a spacious living room which has ample natural light from the window to the front and overlooks a beautiful green space. Also, from the living room there are stairs to the first-floor accommodation. Towards the rear of the home there is a well-proportioned dining room which is linked to a beautifully finished kitchen with integrated fridge/freezer and an oven and hob.

On the first floor there is a good-sized landing, from here you have access to all three bedrooms. Two of these are generous sized doubles with built-in storage. There is a third bedroom which can be used as a good sized single or would make a perfect home office. There is also a good-sized bathroom with a low-level basin, a WC and a shower.

OUTSIDE

There is a generous sized rear garden which is South facing and measures approximately 13m x 7.5m. The garden is mainly laid to lawn with a wide variety of shrubs and plants in the borders. There is a side access which leads to the garden.

There is access to the garage from your garden as well. There is a parking space in front of the garage.

ADDITIONAL INFORMATION

Gas central heating. All mains' services connected.

LOCATION

Frome is a historic market town with many notable buildings and features the highest number of listed buildings in Somerset. Frome offers a range of shopping facilities, a sports centre, several cafés, a choice of pubs, local junior, middle and senior schools, several theatres, and a cinema. The local railway station connects at Westbury for London Paddington.





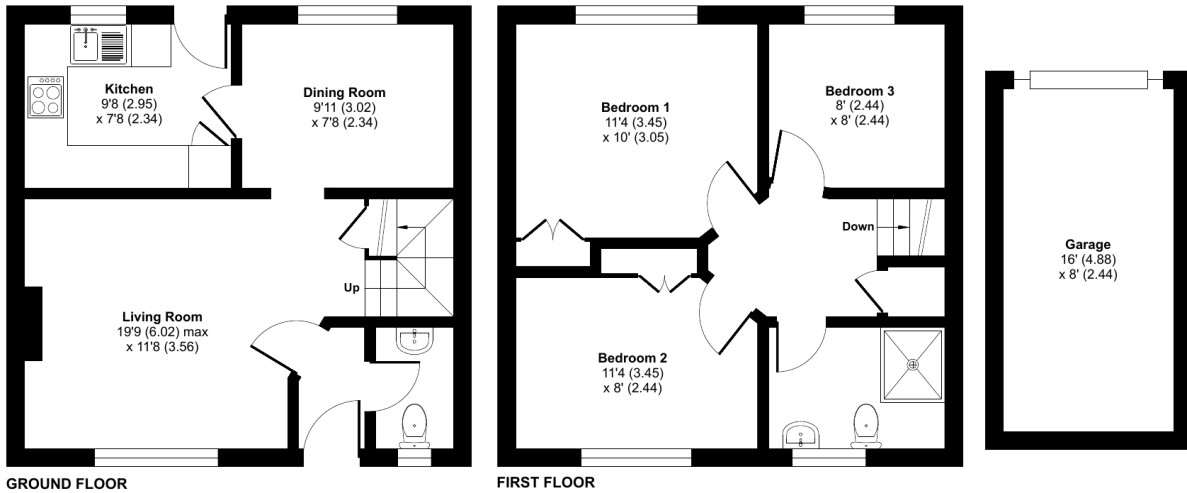
Rivers Reach, Frome, BA11

Approximate Area = 796 sq ft / 73.9 sq m

Garage = 128 sq ft / 11.8 sq m

Total = 924 sq ft / 85.7 sq m

For identification only - Not to scale



Floor plan produced in accordance with RICS Property Measurement Standards incorporating International Property Measurement Standards (IPMS2 Residential). © nichecom 2023. Produced for Cooper and Tanner. REF: 1028626



FROME OFFICE

Telephone 01373 455060

6 The Bridge, Frome, Somerset, BA11 1AR

frome@cooperandtanner.co.uk

**COOPER
AND
TANNER**

Important Notice: These particulars are set out as a general outline only for the guidance of intended purchasers and do not constitute, nor constitute part of, an offer or contract. All descriptions, dimensions, reference to condition and necessary permissions for use and occupation, warranties and other details are given without responsibility and any intending purchasers should not rely on them as statements or representations of fact but must satisfy themselves by inspection or otherwise as to the correctness of each of them.

