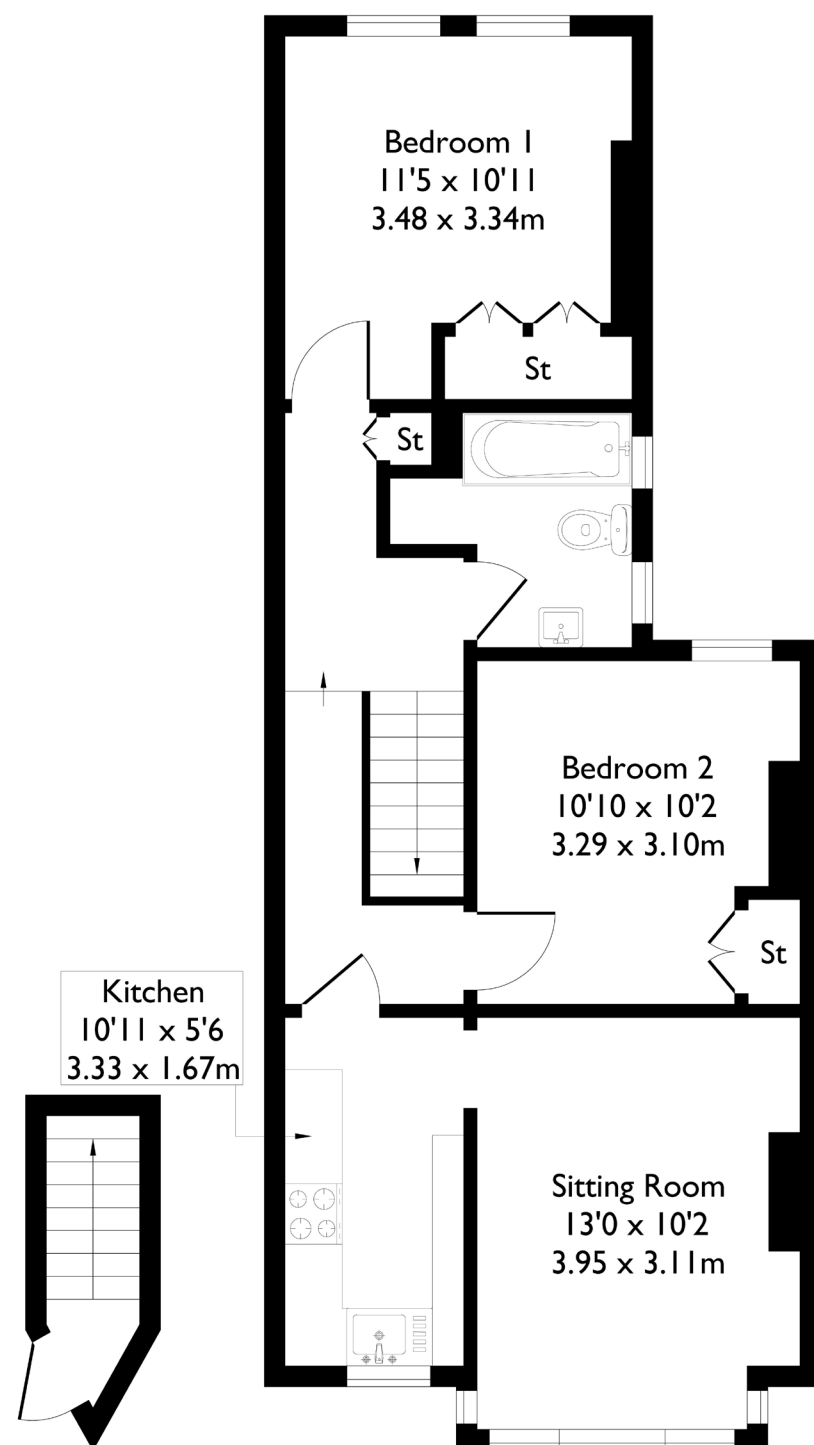


## Windermere Road, London, W5

Approximate Floor Area = 55.1 sq m / 593 sq ft



**Ground Floor First Floor**



### 2 BEDROOM FLAT

## Windermere Road, W5

£475,000

A unique opportunity to secure a first-floor two-bedroom apartment in the popular Northfields area, overlooking Lammas Park. The property features a bright south-facing lounge, a separate kitchen, two generous double bedrooms with built-in wardrobes and park views, and a family bathroom.

One of the few properties on the street with potential to extend into the loft (subject to planning permission), this home offers a well-balanced layout and excellent scope to add value.

### FEATURES

- Two Bedrooms
- One Bathroom
- Separate Kitchen/Living
- Potential to Extend into Loft (STPP)
- Northfields Station
- Northfields Amenities
- Fielding Primary School/ Elthorne Park High School
- EPC Rating C



2 BEDROOM FLAT

# Windermere Road, W5 £475,000

Ideally located, the property is just a five-minute walk from Northfields Station and local amenities, while also being close to beautiful green spaces such as Lammas Park and Walpole Park.

The property falls within the catchment area for Fielding Primary School and Ealing Fields High School and is approximately a twenty-minute walk to Ealing Broadway.

Offered chain-free, this home presents a fantastic opportunity for buyers seeking a property with scope to personalise and enhance.

EPC Rating C

