



HILTON KING & LOCKE  
SPECIALISTS IN PROPERTY



1 St Gregory Close, South Ruislip, Greater London. HA4 0SR.

OIEO £284,000 Leasehold

**\*STUNNING ONE BEDROOM MAISONETTE\***

**\*GROUND FLOOR\***

**\*WELL KEPT COMMUNAL REAR GARDENS\***

**\*NO UPPER CHAIN\***

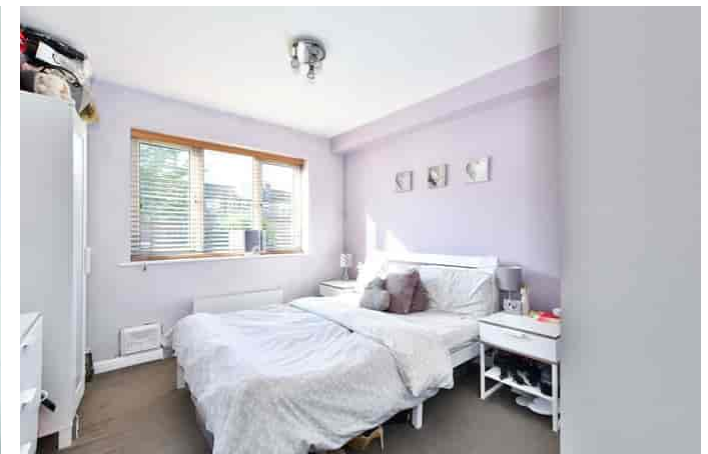
**\*WALKING DISTANCE TO SOUTH RUISLIP STATION AND AMENITIES\***

An immaculate one bedroom ground maisonette offered for sale with no upper chain, therefore perfect if you are looking for a hassle free and speedy purchase.

This stunning property is located in a small and quiet cul-de-sac, just moments from The Old Dairy Leisure Complex plus shops and amenities. Furthermore, South Ruislip Station is less than half a mile away with Ruislip Gardens and Ruislip Manor Stations also within short proximity. The A40 is also just a few minutes drive away.

Internally you have an entrance hall with handy storage cupboards, a front aspect 16'x10'10 living/dining room, a modern fitted kitchen/breakfast room with space for table and chairs and has integrated appliances, a 11'10x10'2 rear aspect double bedroom and a bathroom.

To the outside the pretty front garden is laid to lawn with flower borders, and the rear communal grounds are of excellent size with lawn and well maintained shrub borders.

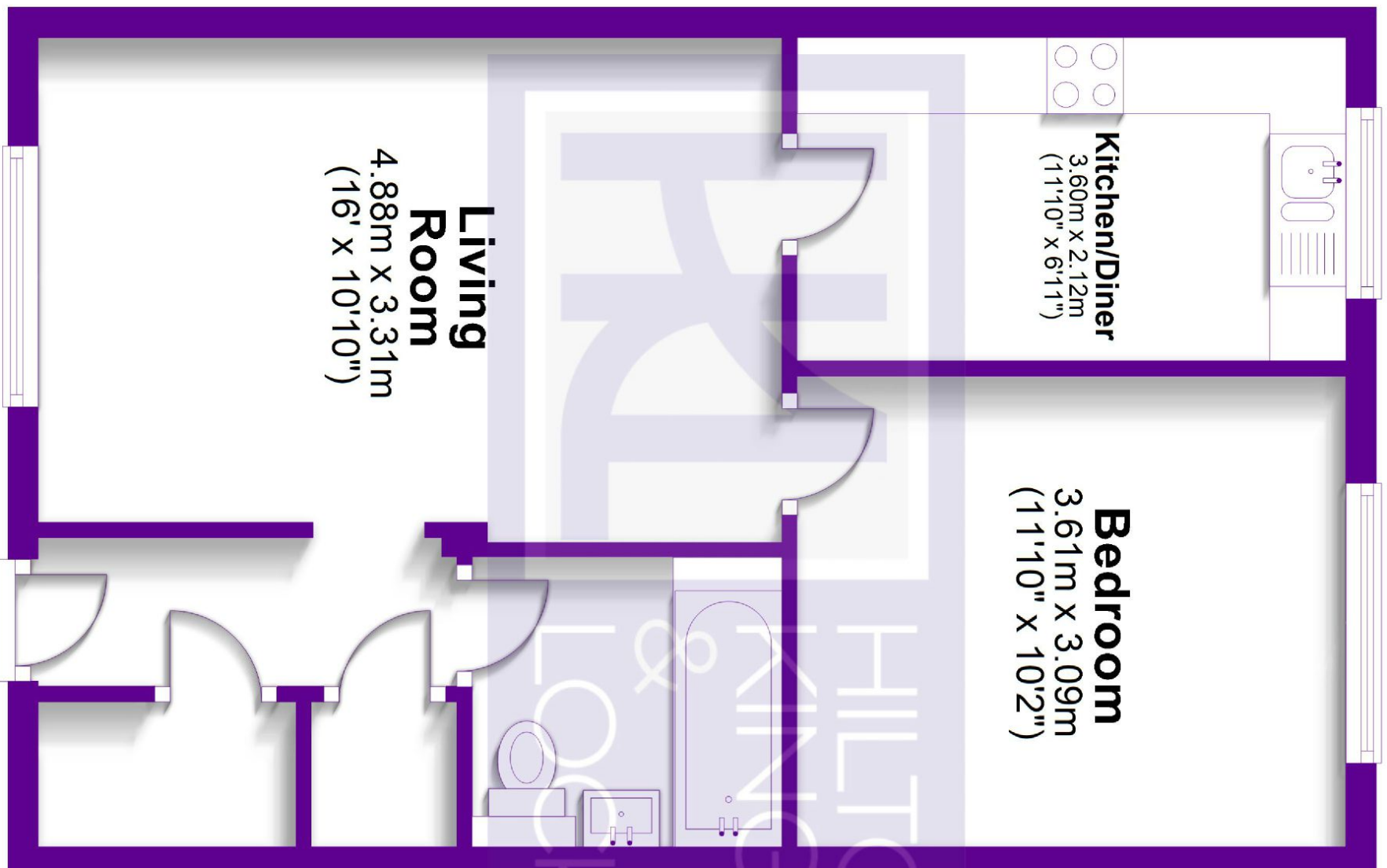
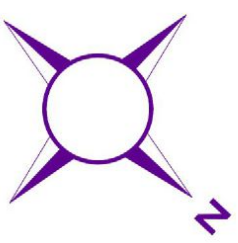






# Ground Floor

Approx. 45.6 sq. metres (491.0 sq. feet)



Total area: approx. 45.6 sq. metres (491.0 sq. feet)