

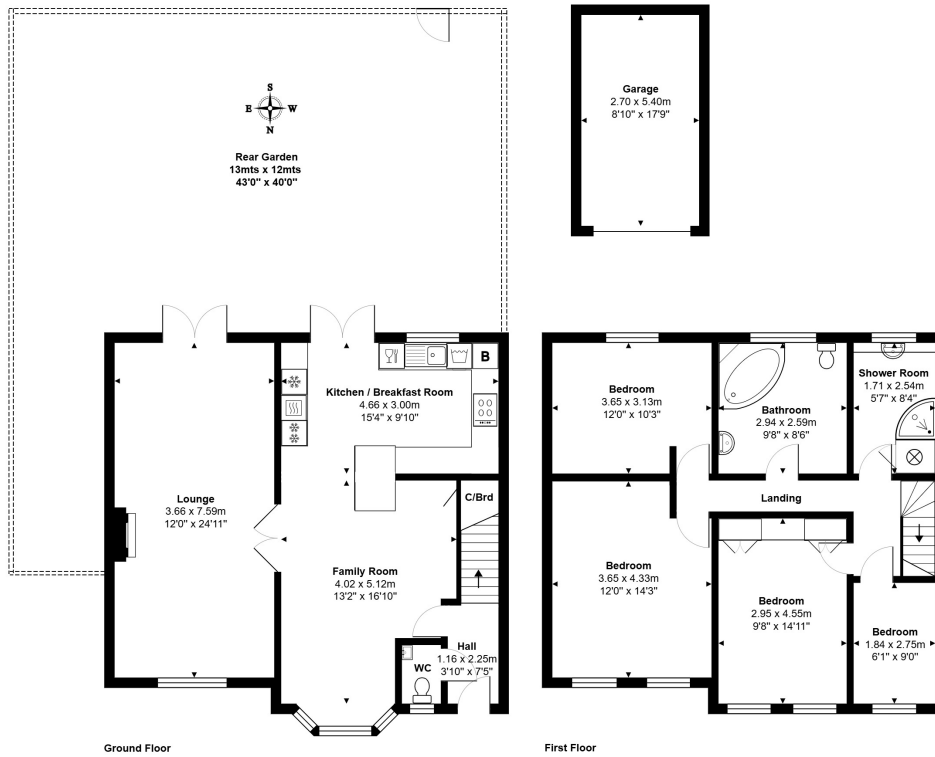


Shaftesbury Crescent, Staines-upon-Thames, Surrey, TW18 1QW

STUNNING HUGELY EXTENDED FOUR BEDROOM PROPERTY SITUATED ALONG THIS MUCH SOUGHT AFTER ROAD IDEALLY LOCATED FOR EASY ACCESS TO BOTH STAINES & ASHFORD TOWN CENTRES, LOCAL MOTORWAY NETWORKS, SHOPS & SCHOOLS. The property is in great condition throughout and benefits from a spacious lounge, luxury kitchen/diner/family room, downstairs W.C, four well-proportioned bedrooms, two bath/shower rooms, secluded rear garden and garage. Viewings Highly Recommended!

ROOM DESCRIPTIONS

FLOORPLAN



Total Area: 155.0 m² ... 1668 ft²

All measurements are approximate and for display purposes only.

127a, High Street, Staines-upon-Thames, TW18 4PD

01784 451458

staines@gregory-brown.co.uk