

FOR SALE

£559,950

Conway Crescent, Perivale, Greenford, Greater London. UB6



Peter Gamble & Co. offer to the market for CHAIN FREE SALE. This beautifully presented 3 BEDROOM home.

Situated in the ever popular Medway Village, this particular home is finished to a very high standard, having been completely refurbished throughout by the current owners including features such as; SOLID WOOD FLOORING throughout, recessed LED spotlights, WOODEN SHUTTERS THROUGHOUT, BESPOKE HALLWAY SEATING AND STORAGE, GLASS FRONTED KITCHEN CABINETRY.

The property is approached via the block paved driveway allowing parking for 2 cars, as you enter the property the hallway has fitted storage and a beautiful quilted seating area. The main living space of the



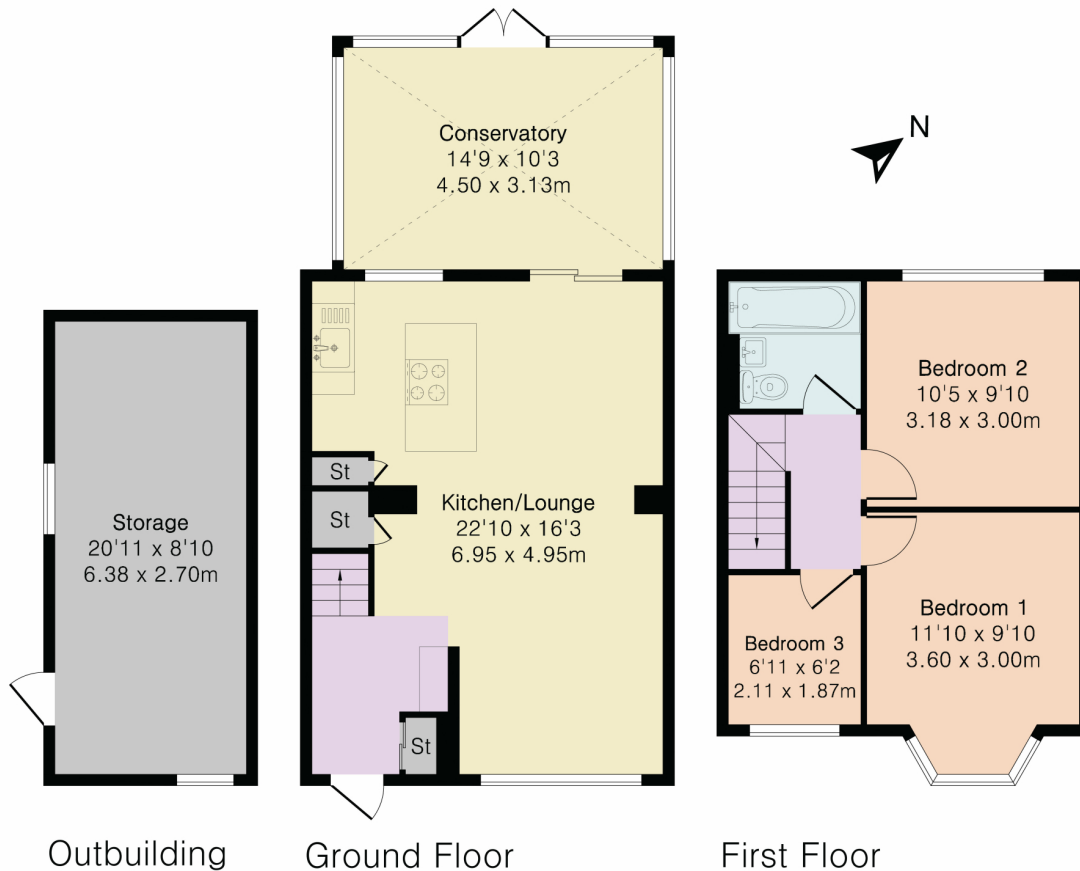


**Approximate Gross Internal Area 874 sq ft - 81 sq m
(Excluding Outbuilding)**

Ground Floor Area 530 sq ft – 49 sq m

First Floor Area 344 sq ft – 32 sq m

Outbuilding Area 185 sq ft – 17 sq m



Floor plan produced in accordance with RICS Property Measurement 2nd Edition. Although Pink Plan Ltd ensures the highest level of accuracy, measurements of doors, windows and rooms are approximate and no responsibility is taken for error, omission or misstatement. These plans are for representation purposes only and no guarantee is given on the total square footage of the property within this plan. The figure icon is for initial guidance only and should not be relied on as a basis of valuation.

