



Fairfield Hall

Apartment 90 West Wing | Kingsley Avenue | SG5 4FX

FINE & COUNTRY



Step inside

West Wing, Fairfield Hall

This remarkable property seamlessly blends period features with modern comfort. The moment you step into the entrance, the expansive space and unique architectural details capture your attention. The focal point of this property is undoubtedly its vaulted ceilings. Towering above, these ceilings create an airy and majestic atmosphere, providing a sense of openness and grandeur. The arches and curves of the vaulted design add a touch of elegance, reflecting a bygone era. The living spaces are generously proportioned, offering an abundance of room for various purposes. The main reception area is a vast expanse, bathed in natural light streaming through large windows. The open-plan kitchen/diner connects living, dining and even entertainment areas, fostering a sense of connectivity.

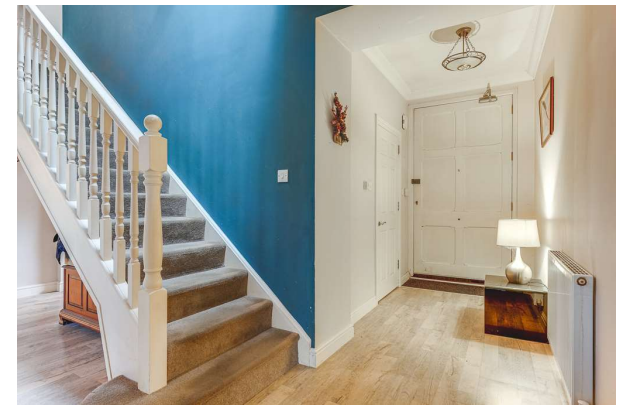


The large, ground floor, bedroom exudes an air of luxury and comfort, designed to provide both functionality and aesthetic appeal. The master bedroom has dual aspect windows which allow ample natural light to flood the room during the day, creating an inviting and airy atmosphere. The overall design of this large bedroom with a dressing area, fitted wardrobes, and an en-suite reflects a harmonious blend of comfort and functionality. On the ground floor you will also find a cloakroom and storage cupboards.

The upstairs of the house features a distinctive design with a galleried first floor, creating an open and visually appealing space that overlooks the floor below. The first floor accommodates two bedrooms, each designed with comfort and style in mind. Connected to the bedrooms is a well-appointed family bathroom, a utility room, providing convenient and practical amenities. This room is equipped with laundry facilities, making it a functional space for handling household chores efficiently.









Step outside

West Wing, Fairfield Hall

The rear garden, accessed via the master bedroom and front of the property, is a great addition to this already spectacular home, with both a lawn and patio area adding a prominent space for entertaining and alfresco dining. Enclosed with a wall, trees and mature shrubs surrounding the borders leaves this garden feeling very private and inviting.

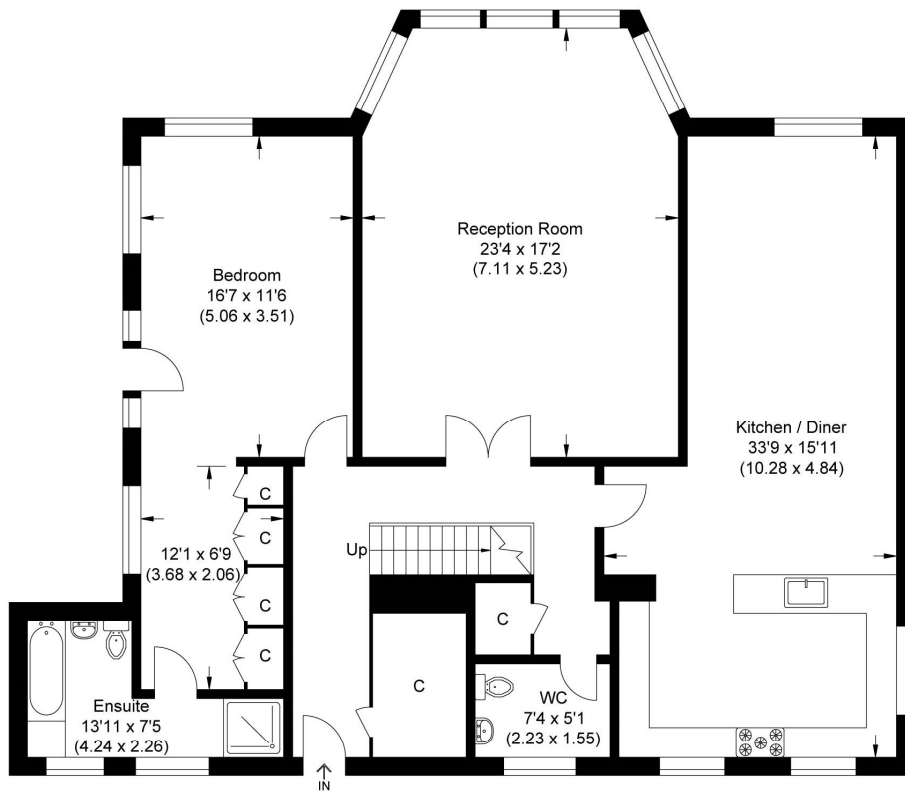
Fairfield is situated just 1.5 miles from Stotfold. Stotfold, surrounded by breathtaking countryside, offers all the advantages of life in a small and charming town and yet, thanks to the area's superb transport connections, also ensures that the bright lights of London are within easy reach. Graced by the River Ivel which runs through the town, Stotfold has always been a desirable place in which to live, with evidence of human habitation stretching back to the Stone Age. Recorded in the Domesday Book of 1066, the small settlement of Stotfold continued to develop largely because of its strategic positioning on the Great North Road, eventually being regarded by the 1800's as a prosperous place in which to live.



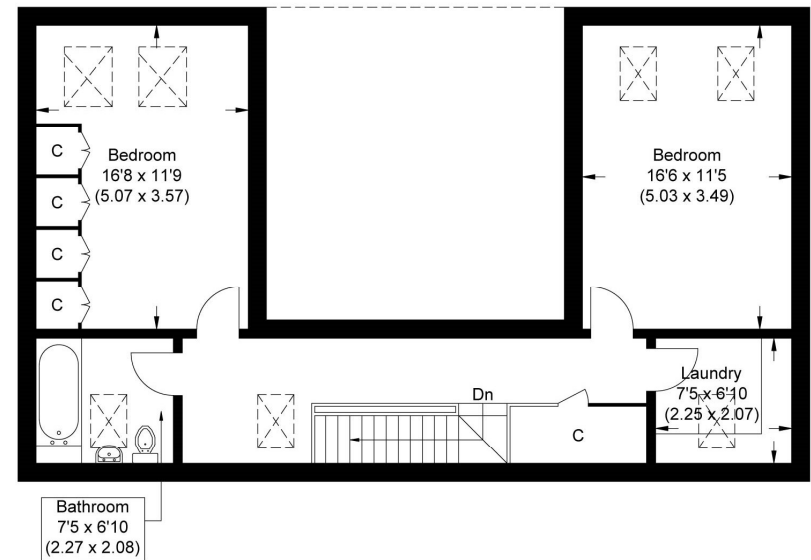
West Wing

Approximate Gross Internal Area

202.60 sq m / 2180.76 sq ft



Ground Floor



First Floor

Fine & Country
Tel: +44(0) 1462 222555
northherts@fineandcountry.com
Station Place, Letchworth Garden City, Hertfordshire SG6 3AQ

