



2 Rosedene Close, Onchan, Isle of Man. im33hu

A large detached 3 bedroom dormer bungalow occupying an excellent corner plot close to amenities



£419,995 Freehold

PROPERTY DESCRIPTION

ACCOMMODATION This traditionally built large detached dormer bungalow has been a one owner property from new and, whilst a bit of modernisation is required, it has been extremely well maintained throughout. The property occupies a spacious corner plot with surrounding gardens including a private almost South facing walled garden to the rear.

The accommodation on the ground floor briefly comprises of a large 22' lounge, separate dining room leading into the fitted kitchen which could be knocked into a large dining kitchen if required. Also on the ground floor there is also a double bedroom, a large bathroom and a separate cloakroom.

On the first floor there are 2 double bedrooms plus a spacious dressing room which could be converted into an en-suite subject to the necessary permissions. The first floor also benefits from distant rural and sea views.

The property also benefits from a spacious driveway and attached 24' garage.

FEATURES

- OPEN HOUSE WEDNESDAY 25th JUNE 2025 12PM UNTIL 2PM
- Large Detached Dormer Bungalow
- Excellent Corner Plot
- Requires General Modernisation
- Extremely Well Maintained
- Kitchen plus Separate Dining Room
- Spacious 22' Lounge
- Bathroom plus Separate Cloakroom
- Excellent Lawned Gardens
- Driveway plus Attached Garage
- No Onward Chain



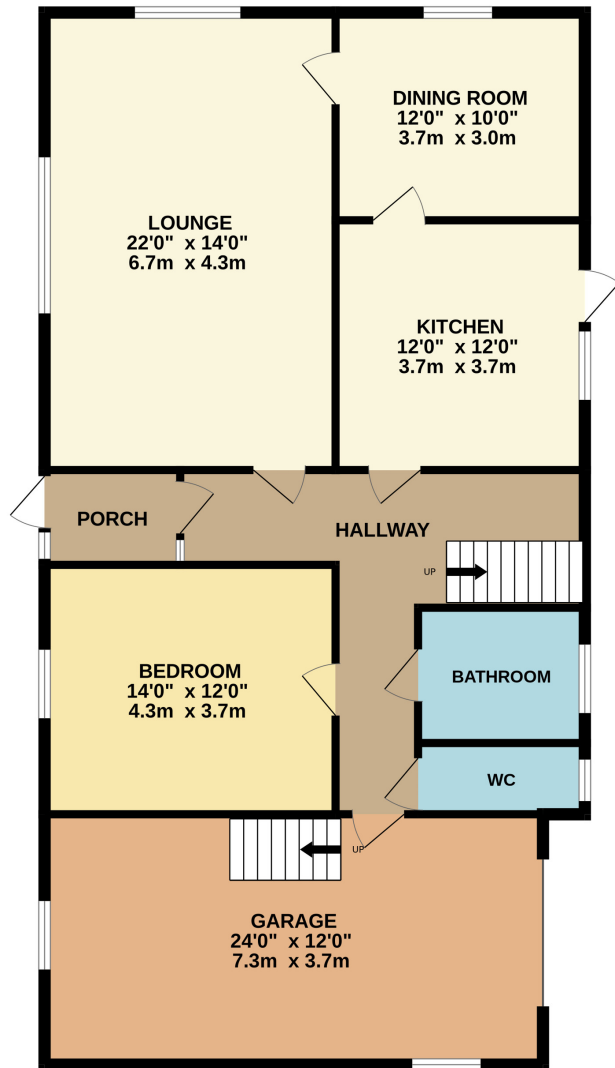
Property Images



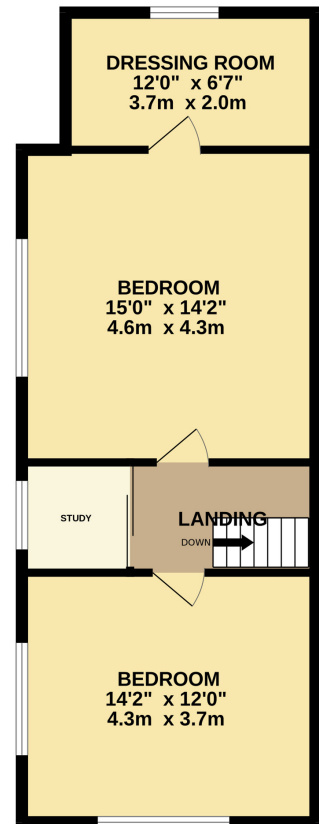
FLOORPLAN



GROUND FLOOR
1290 sq.ft. (119.8 sq.m.) approx.



1ST FLOOR
536 sq.ft. (49.8 sq.m.) approx.



TOTAL FLOOR AREA : 1825 sq.ft. (169.6 sq.m.) approx.

Whilst every attempt has been made to ensure the accuracy of the floorplan contained here, measurements of doors, windows, rooms and any other items are approximate and no responsibility is taken for any error, omission or mis-statement. This plan is for illustrative purposes only and should be used as such by any prospective purchaser. The services, systems and appliances shown have not been tested and no guarantee as to their operability or efficiency can be given.
Made with Metropix ©2025

DISCLAIMER: Whilst Manxmove Ltd believe that these details are correct, neither Manxmove Ltd or their clients guarantee their accuracy in any way. Consequently, these details are not to be used to form part of any legally binding contract. Prospective purchasers or tenants are advised to visit this property to satisfy themselves as to the correctness of these details. Please note, we use wide angle camera lenses in order to show as much of each room as possible. This is not intended to mislead any prospective purchasers or tenants in any way and an honest verbal description is always available prior to viewing if required.