

TENNYSON APARTMENTS, SAFFRON CENTRAL SQUARE

£350,000

This generous two-bedroom apartment offers modern living at its finest within the highly desirable Saffron Square development. Ideally located just moments from East Croydon station and the Whitgift Centre, it provides exceptional convenience and connectivity. The property benefits from an array of high-quality amenities, including a residents' gym, lift access, an on-site TESCO Express, and a 24-hour concierge service. A perfect opportunity for both homebuyers and investors seeking a prime location with luxurious features.

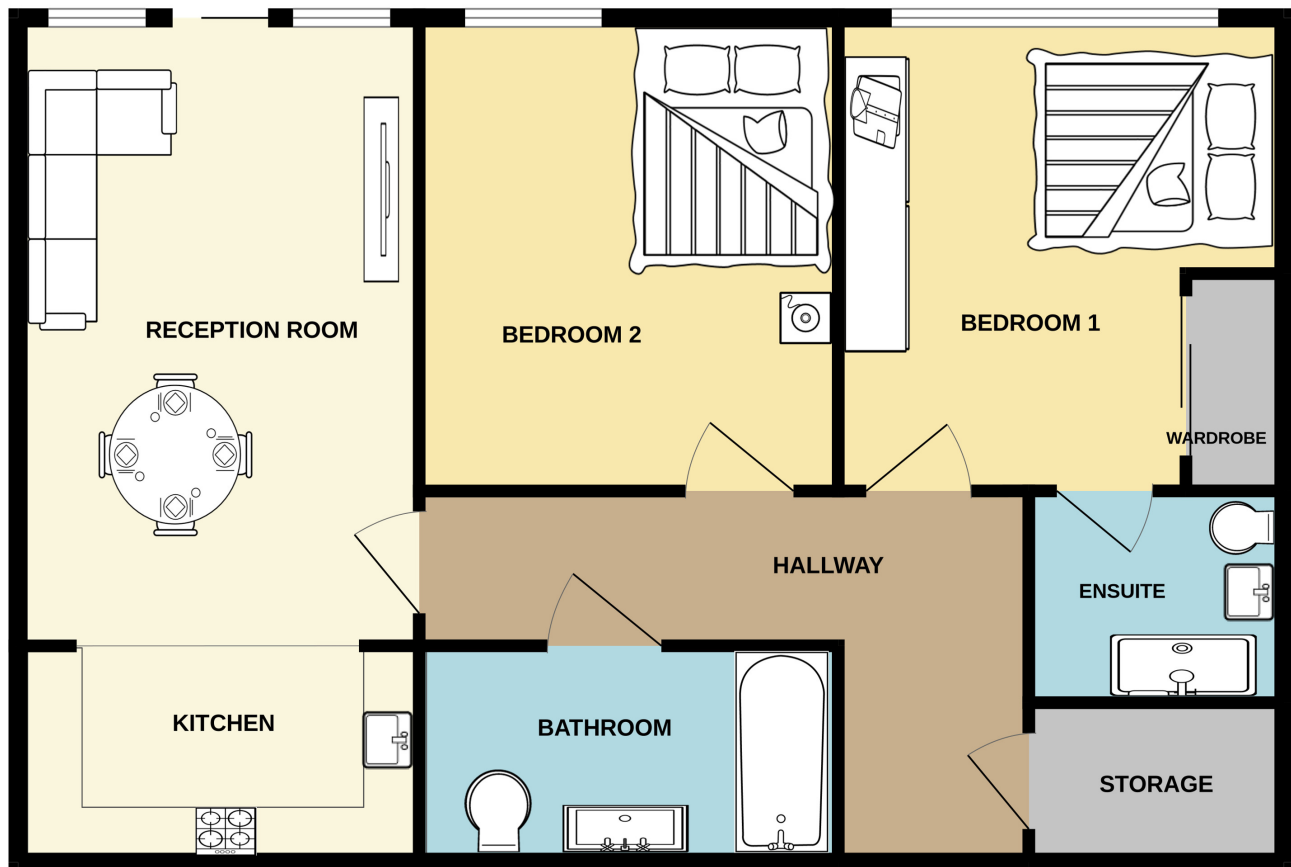
- 3 Years Service Charge Benefit
- Residents Lounge and Gym
- 24 Hour Concierge

VIEWING BY APPOINTMENT WITH 1ST AVENUE. CALL: 020 8603 7107

**APARTMENTS, SAFFRON
CENTRAL SQUARE,
CROYDON, SURREY CRO
2FY**

£350,000

GROUND FLOOR
732 sq.ft. (68.0 sq.m.) approx.



TOTAL FLOOR AREA : 732 sq.ft. (68.0 sq.m.) approx.

Whilst every attempt has been made to ensure the accuracy of the floorplan contained here, measurements of doors, windows, rooms and any other items are approximate and no responsibility is taken for any error, omission or mis-statement. This plan is for illustrative purposes only and should be used as such by any prospective purchaser. The services, systems and appliances shown have not been tested and no guarantee as to their operability or efficiency can be given.
Made with Metropix ©2025

**VIEWING BY APPOINTMENT
WITH 1ST AVENUE.**

CALL: 020 8603 7107

1stavenue
Real Estate Services