

FOR SALE


£150,000 Freehold



REDDINGTON  
SALES & LETTINGS

# 28 Main Street, Thringstone, Coalville, Leicestershire. LE67 8NA

Thringstone  
20-22, Main Street, Thringstone, Coalville, LE67 8NA

01530 223402   
[info@reddingtonhomes.co.uk](mailto:info@reddingtonhomes.co.uk)

## ABOUT THE PROPERTY

Perfect for investors wanting a buy to let or first time buyers wanting to get on the property ladder. This 2 bedroom terraced property comprises entrance hall, spacious lounge, kitchen and downstairs bathroom. The first floor comprises 2 bedrooms. There is a private garden to the rear and on street parking to the front of the property. Located in the popular village of Thringstone close to schools, transport links and local amenities.

## FEATURES

- Terraced property
- 2 bedrooms
- Lounge
- Kitchen
- Downstairs bathroom
- Garden
- On street parking
- Popular village location



## ROOM DESCRIPTIONS

### Details

Entrance hall

Fitted carpet, UPVC front door, pendant lighting

Lounge 3.42m x 4.32m

fitted carpet, window to front and back elevations, under stairs storage, gas fire place with brick hearth, pendant lighting, power and radiator

Kitchen 2.42m x 2.21m

Linoleum flooring, 4 ring electric hob oven, extractor fan, sink with drainer, window to side elevation, uPVC back door, pendant lighting, tiled splash back

Bathroom 2.06m x 1.82m

Laminate flooring, 3 piece suite, window to side elevation, tiled splash back, pendant lighting, radiator

### Cont.

Landing

Fitted carpet, pendant lighting

Bedroom 1 4.33m x 3.42m

Fitted carpet, window to front elevation, storage over stairs, pendant lighting power and radiator

Bedroom 2 2.63m x 2.24m

Fitted carpet, window to rear elevation, pendant lighting power and radiator

Garden

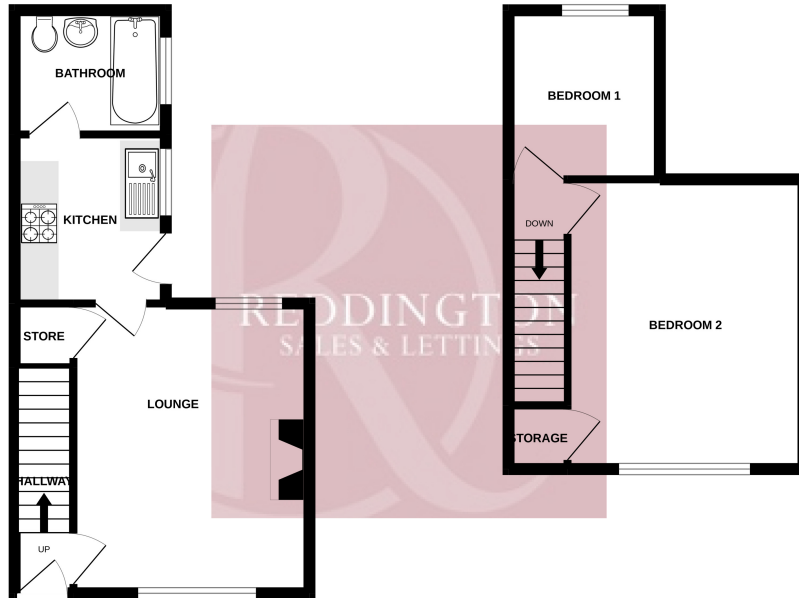
Patio area and laid to lawn with shed



# FLOORPLAN

GROUND FLOOR  
310 sq.ft. (28.8 sq.m.) approx.

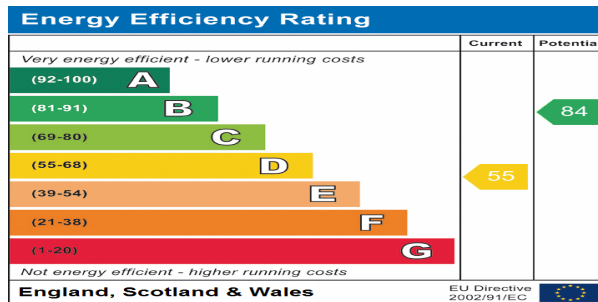
1ST FLOOR  
271 sq.ft. (25.2 sq.m.) approx.



TOTAL FLOOR AREA - 581 sq. ft. (54.0 sq.m.) approx.

Whilst every attempt has been made to ensure the accuracy of the floorplan contained here, measurements of doors, windows, rooms and any other items are approximate and no responsibility is taken for any error, omission or mis-statement. This plan is for illustrative purposes only and should be used as such by any prospective purchaser. The services, systems and appliances shown have not been tested and no guarantee as to their operability or efficiency can be given.  
Made with Metropix i2022

## EPC



Thringstone  
01530 223402

info@reddingtonhomes.co.uk

20-22, Main Street, Thringstone, Coalville, LE67 8NA