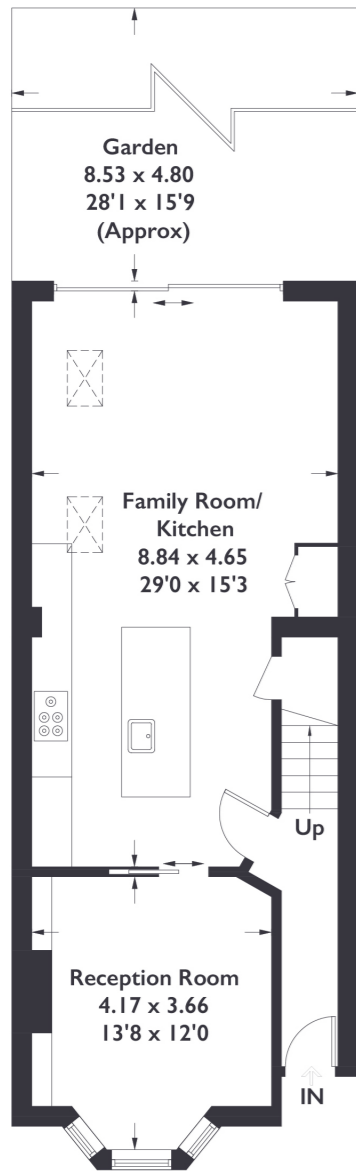
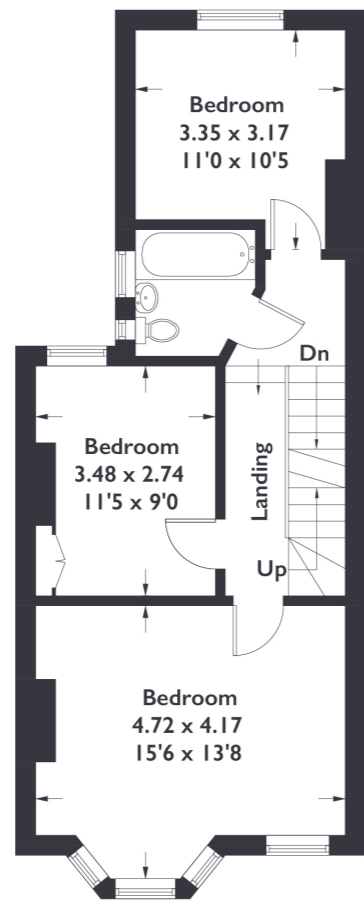


Cumberland Road, W7

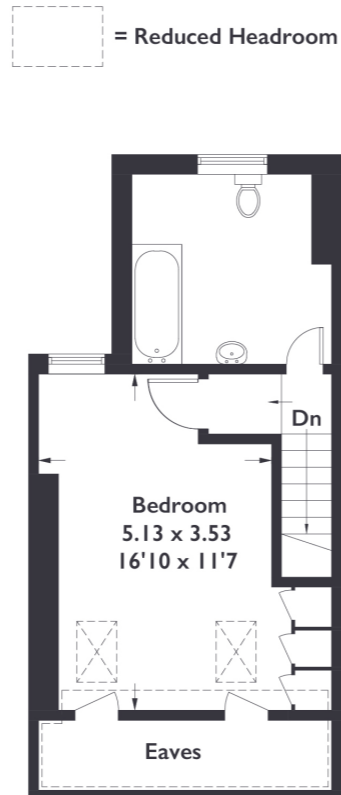
Approximate Gross Internal Area = 147.4 sq m / 1587 sq ft
(Including Eaves / Reduced Headroom)



Ground Floor



First Floor



Second Floor

Measured in accordance with RICS Code of Measuring Practice. To be used for identification and guidance purposes only.
Whilst every care is taken in the preparation of this plan, please check all dimensions, shapes and compass bearings before making any decisions reliant upon them.
www.london58.com © 2023 hello@london58.com



4 BEDROOM HOUSE

Cumberland Road, W7

£925,000

Nestled just off Boston Manor Road, this remarkable terraced property commands attention with its standout presence on the street. Boasting modern interiors and an inviting open-plan living space, it effortlessly captures contemporary living at its finest.

FEATURES

- Four Bedrooms
- Two Bathrooms
- Open Plan Kitchen & Dining
- Loft Conversion
- On-Street Parking
- Ofsted Outstanding Oaklands Primary School
- Ofsted Outstanding Elthorne High School
- Boston Manor Station
- EPC Rating C



4 BEDROOM HOUSE

Cumberland Road, W7

£925,000

Upon entering, your gaze is drawn to a beautifully appointed separate reception room on the right, boasting a stunning bay window and a charming fireplace that exudes character.

The ground floor seamlessly unfolds into a spacious open-plan kitchen and living area, where sliding doors effortlessly connect the indoors with the garden, creating a harmonious indoor-outdoor living experience. Returning to the front of the property and ascending the staircase, you'll discover three delightful bedrooms, with one featuring a bay window that bathes the room in natural light.

The first floor also boasts a generously sized bathroom, designed with both style and functionality in mind. As you make your way to the third floor, a sense of luxury unfolds as you encounter yet another elegantly tiled bathroom, complemented by a double bedroom adorned with skylights. Abundant natural light and thoughtful design elements further enhance the property's appeal. EPC Rating C.

