

FOR SALE

£850,000

32b Gorse Lane, West Kirby, Wirral. CH48 8BH



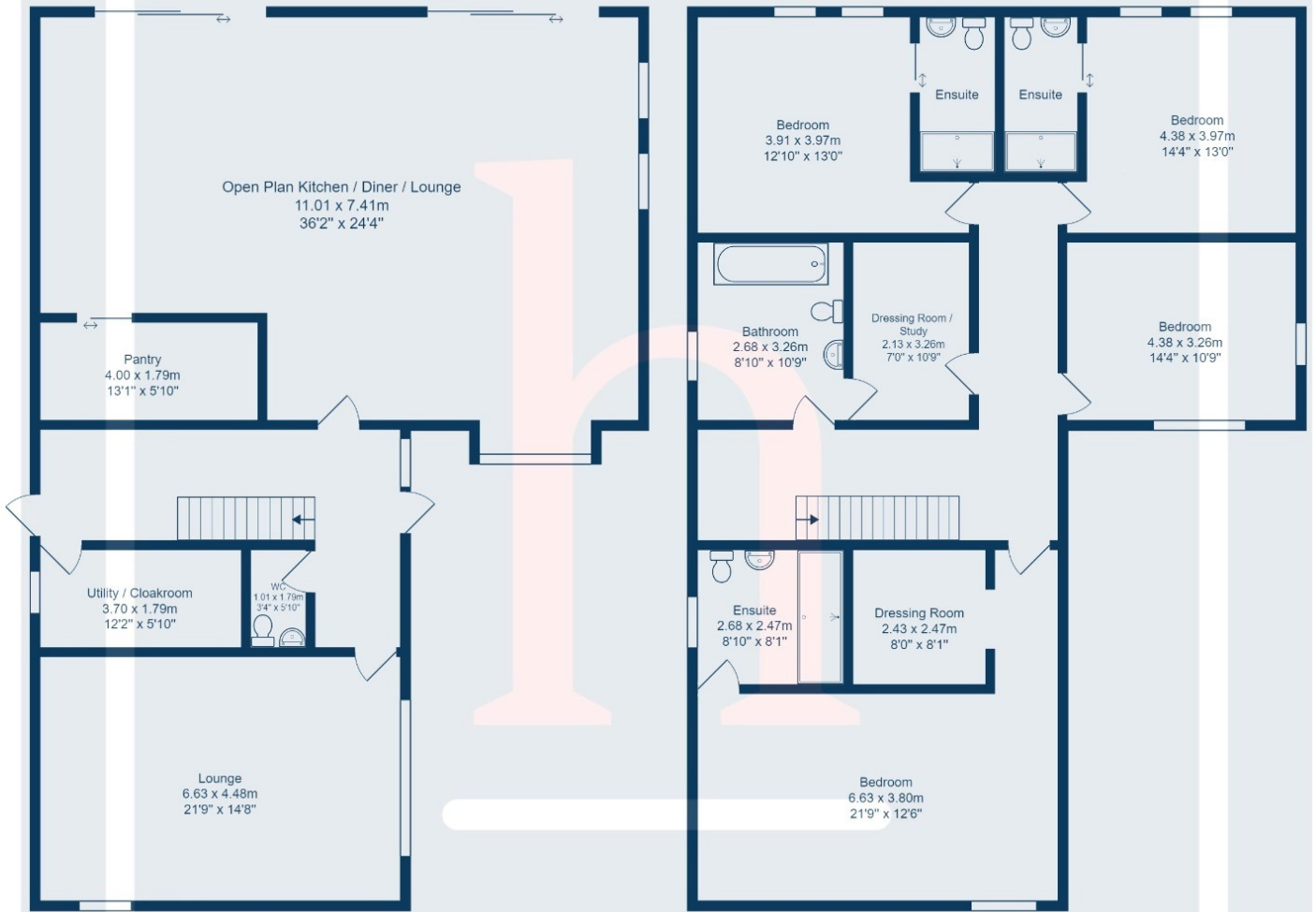
Exclusive Bespoke New Build Detached Home! We are delighted to showcase this stunning architect design executive detached family home in an exclusive private location in West Kirby. With generously proportioned accommodation (approx. 2609sqft) briefly comprising four double bedrooms, four bathrooms, impressive living spaces the property will be finished to an exceptional standard with the highest specification of fittings and materials throughout the build. Accessed via a private road off Gorse Lane set in private grounds this unique home is one of only two individual new builds within this secluded plot. Expected to be ready for occupancy late 2024 this could be your dream move just in time for Christmas!!





Ground Floor

1st Floor



Total Area: 242.3 m<sup>2</sup> ... 2609 ft<sup>2</sup>

All measurements are approximate and for display purposes only.