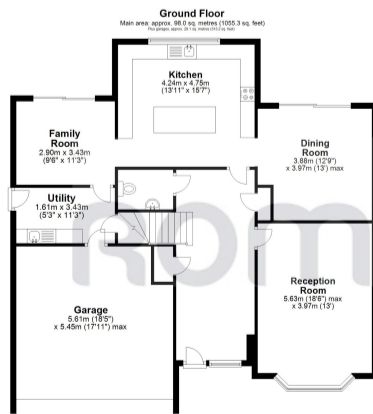
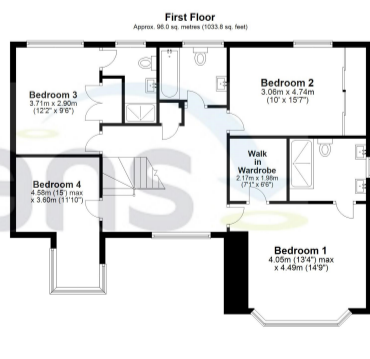


Main area: Approx. 194.1 sq. metres (2089.2 sq. feet)
 Plot: Approx. Approx. 21.1 sq. metres (224.2 sq. feet)
 Floor Plan measurements are approximate and are for illustrative purposes only. While we do not doubt the floor plans accuracy, we make no guarantee, warranty or representation as to the accuracy and completeness of the floor plan.
 Plan produced using PlanIt.



Main area: Approx. 194.1 sq. metres (2089.2 sq. feet)
 Plot: Approx. Approx. 21.1 sq. metres (224.2 sq. feet)
 Floor Plan measurements are approximate and are for illustrative purposes only. While we do not doubt the floor plans accuracy, we make no guarantee, warranty or representation as to the accuracy and completeness of the floor plan.
 Plan produced using PlanIt.





Asking Price £699,950

Myler & Co are delighted to offer for sale this IMMACULATELY PRESENTED FOUR BEDROOM DETACHED FAMILY HOME, located in The Historic Village of Famworth, situated on HIGHLY sought after 'THE NEW HERITAGE COLLECTION' by Redrow - 'LANCASTER PLACE' built to 'The Richmond' design. Benefitting from FOUR DOUBLE BEDROOMS, with TWO en-suites, DOUBLE INTEGRAL GARAGE, FAMILY ROOM, downstairs cloakroom. Close to local amenities major road and railway networks, shops, primary schools and walking distance to BIRCHFIELD GARDENS, VICTORIA PARK, WADE DEACON ACADEMY and SIXTH FORM COLLEGE. Viewing is HIGHLY recommended.



- The New Heritage Collection by Redrow
- Lancaster Place Development
- Four Double Bedrooms
- UPVC Double-Glazing
- Gas Central Heating
- Two En-suites
- Three Reception Rooms
- Integral Double Garage
- Immaculate Throughout