



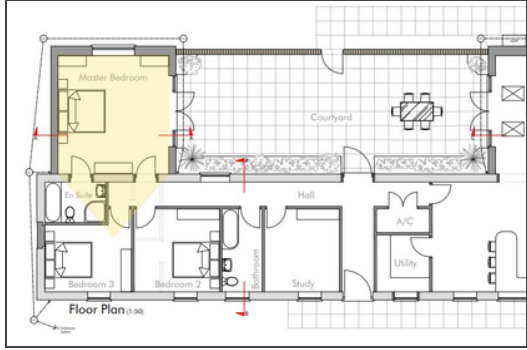
**Centre Farm Barns, Stradsett, King's Lynn, Norfolk  
, PE33 9HH**

**£350,000 Freehold**

- Two Detached Barns For Renovation
- Full Planning Permission Approved
- planning For Two 3 Bedroom Detached Barns
- Viewing By Appointment
- Generous Gardens
- Kings Lynn & West Norfolk Council
- Planning Reference 23/02162/F
- EPC Rating







This pair of detached barns are located on the Stradsett Estate and have been made available for purchase following a successful planning application. Planning approval has been granted by Kings Lynn and West Norfolk council under reference 23/02162/F for two 3 bedroom homes. There is generous gardens, parking and countryside views. Located in the village of Stradsett only 4 miles from Downham Market town and mainline train station which has connections to Kings Lynn, Cambridge and London.

### Disclaimer

Whilst we have endeavoured to prepare our sales particulars accurately none of the services, appliances or equipment have been tested. A buyer should satisfy themselves on such matters prior to purchase. Any measurements or distances mentioned in these particulars are for guide reference only. If such particulars are fundamental to a purchase, buyers should rely on their own enquiries. All enquiries should be directed to King & Partners in the first instance.

